

# NATIONAL RESIDENT MATCHING PROGRAM

---

2450 N Street, NW • Suite 201 • Washington, DC 20037-1141

---

## NRMP DATA

---

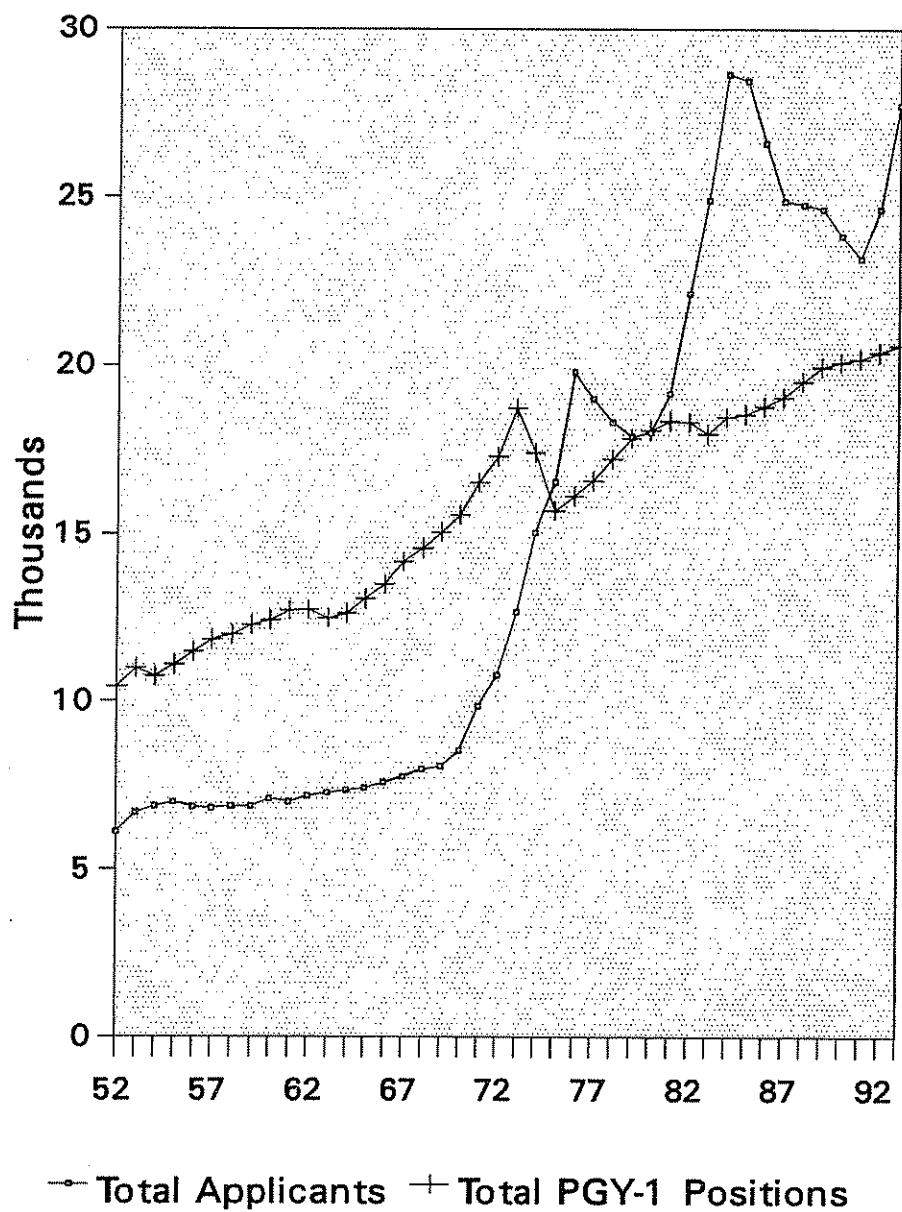
**March 1993**

All rights reserved. Permission to use, copy and/or distribute any documentation and/or related images from this publication shall be expressly obtained from the NRMP.

**Figure 1**

***Applicants & 1st Year Positions***

**1952 -- 1993**



# TABLE OF CONTENTS

---

## 1993 MATCH

### FIGURE

1. Total Applicants and PGY-1 Positions 1952-1993 ..... Inside Front Cover

- INTRODUCTION ..... 1 - 4

TABLES	PAGE
1. PGY-1 Positions Offered in the Matching Program 1984 - 1993 .....	5
2. Applicants in the Matching Program 1984 - 1993 .....	6
3. PGY-1 Positions for Applicants Active in the Match 1971 - 1993 .....	7
4. PGY-1 Positions, Active Applicants and Match Rates 1978 - 1993 .....	8
5. PGY-1 Positions Offered and Filled by U.S. Seniors and Total Applicants 1987 - 1993 .....	9
6. PGY-1 Positions Offered and Percent Filled by U.S. Seniors and Total Applicants 1987 - 1993 .....	10
7. Total Applicants Matched To PGY-1 By Specialty 1984 - 1993 .....	11
8. U.S. Seniors Matched To PGY-1 By Specialty 1984 - 1993 .....	12
9. Foreign Trained Physicians Matched To PGY-1 By Specialty 1984 - 1993 .....	13
10. Programs, Positions, Ranked and Filled in 1993 by U.S. Seniors and Total Applicants .....	14
11. U.S. Student and I.A. Choices By Specialty in 1993 .....	15
12. U.S. Seniors Who Made Choices For One Type of Specialty in 1993 .....	16
13. Match Results For U.S. Seniors--Rank Number Obtained 1986 - 1993 .....	17
14. Applicants Matched By Specialty and State in 1993 .....	18 - 22

# NATIONAL RESIDENT MATCHING PROGRAM

2450 N Street, NW, Suite 201 • Washington, DC 20037-1141

Students-Schools 202 828-0676 • Hospitals-Programs 202 828-0676 • Independent Applicants 202 828-0566

*Managed and Operated by the Association of American Medical Colleges*

<b>Program Sponsors</b>	American Board of Medical Specialties American Medical Association Association of American Medical Colleges American Hospital Association Council of Medical Specialty Societies	
<b>Officers 1992/93</b>	President President Designate Secretary/Treasurer Executive Director	<i>David E. Longnecker, M.D. William G. Lavelle, M.D. Carlos J. Martini, M.D. Robert H. Waldman, M.D.</i>
<b>Board of Directors</b>	American Board of Medical Specialties  American Medical Association  Association of American Medical Colleges  American Hospital Association  Council of Medical Specialty Societies	<i>J. Lee Dockery, M.D. David E. Longnecker, M.D.  Carlos J. Martini, M.D. Charles D. Sherman, Jr., M.D., P.C.  Russell L. Miller, M.D. Norma E. Wagoner, Ph.D.  William G. Lavelle, M.D. Kevin M. Fickenscher, M.D.  Mitchell L. Rhodes, M.D. Warren H. Pearse, M.D.</i>
<b>Student Representatives</b>	AAMC Organization of Student Representatives American Medical Student Association Consortium Of Medical Student Organizations AMA Medical Student Section	<i>Robin T. Zon Shelby Rush Fernando Bayardo Jeffrey J. Clifton</i>
<b>Support</b>	Deputy Executive Director Director of Operations Manager Systems Coordinator	<i>Richard R. Randlett Robert Colonna Kathryn Creighton Scott Brueckner</i>
<b>Systems Consultant</b>	National Matching Services, Inc.	<i>Elliott Peranson, M.A.Sc.</i>

An Illinois not-for-profit corporation. Incorporated 1953.

## NATIONAL RESIDENT MATCHING PROGRAM

The National Resident Matching Program was established in 1952 to provide both applicants and residency program directors a fair opportunity to consider their options for appointment, to make reasoned decisions and to have their decisions announced at a specified time. A brief introduction is followed by the presentation of the results of the NRMP for 1993/94 appointments in graduate medical education.

The first Match was conducted in 1952 when 11,000 internship positions were available for 6,000 U.S. graduating seniors. By 1973 there were 19,000 positions for just over 10,000 U.S. graduating seniors. Following the demise of the internship in 1975, the number of first post graduate year (PGY-1) positions dropped to 16,000. The number of PGY-1 positions has gradually increased to reach 20,598 in the 1993 Match [(Figure 1, inside cover) and (Table 1)]. U.S. graduating seniors reached a high in 1985 when 16,179 enrolled in the Match. A small decrease in the number of U.S. graduating seniors occurred each year between 1986 and 1990. The first increase since 1985 was seen in 1991 when 15,268 U.S. seniors enrolled. After another decline in 1992 the number of U.S. seniors again rose to 15,386 for this year's Match (Table 2).

Tables 1 and 2 illustrate the trends in the number of PGY-1 positions and the number of applicants participating in the Match during the past decade. Many applicants, in addition to U.S. senior medical students, seek residency positions through the NRMP. The different categories of applicants are shown in Table 2. This year, due to pending changes in

Canadian residency requirements, the significant increase in Canadian participants was offset by a much greater increase in the number that withdrew prior to the Match. While U.S. graduates and osteopathic physicians can be appointed outside of the matching program, program directors increasingly have required these applicants to participate in the Match especially if they are seeking a PGY-2 position, which, while being offered in the 1993 Match, will not begin until July 1994. The low Match rates for PGY-1 positions for these applicants should be interpreted with this fact in mind. U.S. and non-U.S. foreign medical graduates can also be appointed outside of the Match; however, program directors and applicants are insured of obtaining their most desirable match if they participate fully in the process.

Of particular note is the 43.6% increase in the number of non-U.S. foreign trained physicians who registered for the 1993 Match, resulting in a substantial increase (35.1%) in the number that submitted Rank Order Lists (Active). However, as there was not a corresponding increase in the number of available positions, their success in being matched to a position declined from 63.0% in 1992 to 58.4%.

The ratios of positions to active applicants from 1971 through 1993 are shown in Table 3. This table has been revised from prior issues and no longer attempts to report ratios of positions to U.S. citizens, a data element which is not available and was assumed in the past to equate with U.S. seniors, which is not completely accurate. The ratio of PGY-1 positions per active U.S. senior declined from 2.0:1 in 1973 to a low of 1.2:1 in 1985. Since then it has gradually

increased to 1.5:1 in 1992 and remains the same for 1993. The ratio of such positions to total applicants is quite different. With the influx of applicants who are not U.S. seniors the ratio of PGY-1 positions to applicants has declined from a high of 1.8:1 in 1971 to a low of 0.8:1 in 1984. In the current Match the ratio stands at slightly less than one position for each active applicant.

Table 4 has also been revised from prior issues and now shows the fluctuation of match rates for U.S. seniors, U.S. FMGs (U.S. citizens trained in foreign medical schools), Non-U.S. FMGs (non-U.S. citizens trained in foreign medical schools), and Others, a category which includes Canadian, Osteopathic, 5th Pathway and U.S. physicians. The match rate for U.S. seniors has fluctuated only slightly from a low of 92.1% in 1982 to a high of 94.0% in 1987. In the current Match, their match rate was 92.4% as it was in 1992. The match rates of foreign trained physicians, however, is very different and is clearly directly related to the ratio of available positions per applicant. From 1983 to 1987, when the number of positions was less than the number of total active applicants, their match rates were well below 50%. In 1993, as applicants again exceed positions, their match rates declined.

Tables 5 and 6 represent the PGY-1 positions offered and filled in each specialty participating in the NRMP from 1987 through 1993. Table 5 depicts the number of positions offered by specialty and shows the number filled by U.S. seniors and by total applicants. It should be noted that although there has been a slight, but steady, increase in the total number of first year positions offered in the Match, the number filled by U.S. seniors has dropped from 13,596 in 1987 to just under 13,000 in 1990 and has stabilized at this number through the 1993 Match. The total number of positions filled, however, was 16,013 in 1987 and

although it has fluctuated, it has risen to 16,896 in the current Match. Table 6 provides the same information on positions offered, but indicates the percentage of positions filled in each specialty by U.S. seniors and total applicants. The overall filling of PGY-1 positions declined from a high of 84.1% in 1987 to a low of 77.6% in 1991, rising again to 82.0% in 1993. There were declines in the fill ratios for individual specialties, not only in the number of U.S. seniors but also, in some cases, their total number filled. The increase in the number and corresponding percentage of U.S. seniors matching to positions in Family Practice, from 1,398 in 1992 to 1,636 in the 1993 Match, may indicate a response to the need for more primary care physicians. However, this is not supported by the steady decline of U.S. seniors in Internal Medicine. The statistics also indicate that the decline in Internal Medicine is compensated for by an increase of non-U.S. seniors being matched into positions. Furthermore, the "leakage" of Internal Medicine residents into medical sub-specialties, makes it difficult to determine the impact of PGY-1 numbers on eventual numbers of generalists. General Surgery, Psychiatry and Transitional Programs also show a decline of U.S. seniors being matched and an increase in the number of non-U.S. seniors. Only the surgical and support specialties appear to have escaped this trend and continue to maintain more of a constant mix. Of those specialties offering a significantly large number of positions in the 1993 Match, only Obstetrics and Gynecology, Orthopedic Surgery, Emergency Medicine and Diagnostic Radiology continued to maintain fill rates above 95%.

Table 7 shows the total number of applicants and the percentages that matched to PGY-1 positions by specialty. One can see a decline in the percentage of total applicants that matched into Family Practice from 1984 until 1992 with an upswing in 1993. There has

also been a relatively constant percentage matching to Internal Medicine, Pediatrics and the Medical Specialties. Psychiatry, on the other hand, increased from 4.1% in 1984 to 5.8% in 1988 and then declined to 4.0% in 1993. General Surgery shows a decline from 13.0% of the total applicants in 1984 to only 10% in 1993. Similarly, Transitional Programs have declined from a high of 6.8% of the total applicants to 6.1% in 1993. The Support Specialties, on the other hand, have increased from a low of 7.1% in 1986 to 10.3% in 1993.

Table 8 represents the total number of U.S. seniors and their corresponding percentages matched to PGY-1 positions by specialty. Here again is evidence of the decline in the percentage matched into Family Practice from 13.0% in 1984 through 1992 and their increase to 12.6% in 1993. Pediatrics and Obstetrics/Gynecology both show a slight but steady rise, with Pediatrics increasing from 9.4% in 1984 to 10.5% in 1993 while Obstetrics/Gynecology rose from 6.2% in 1984 to 7.5% in 1993. General Surgery also declined from 13.5% of the total number of U.S. seniors matched in 1984 to only 10.7% of those in the 1993 Match. The Support Specialties, strongly influenced by the growth in the number of U.S. seniors matching into Emergency Medicine and Diagnostic Radiology which offset the decline in the number matched into PGY-1 programs of Anesthesiology, enjoyed an increase from 8.5% in 1984 to 10.9% in 1993 of the newly graduating U.S. seniors.

Table 9 is similar to Tables 7 and 8, but pertains only to foreign trained physicians excluding Canadian and applicants from Fifth Pathway programs. One can see the reverse of some of the trends reflected in U.S. seniors. Internal Medicine's decrease in the number of U.S. seniors matched is countered with an increase

in foreign trained physicians from 41% of such in 1984 to 59.6% in 1991. With the increase in foreign trained physicians participating in the Match, the percent of such matching to Internal Medicine has declined in the past two years to 57.8% of all positions obtained by foreign trained physicians. In numbers they have increased by 608 positions; a 57.2% increase. As might be expected, specialties that have experienced increases in U.S. seniors have a corresponding decrease in the number of foreign trained physicians matched.

Table 10 has also been revised from prior issues. No longer does it attempt to indicate the number of applications filed by applicants, information which is not reported to the NRMP, but rather reports the total number of programs ranked by the applicants. Hence, an applicant ranking ten different programs would contribute a count of ten to the total. The column headed RANK/POSITIONS therefore indicates a measure of the average number each position was ranked. If one examines Table 11, which shows the number of applicants who actually ranked a specialty, one can compute the approximate number of programs ranked by each applicant. For example, 8,397 Family Practice programs were ranked by U.S. seniors. Table 11 shows that 1,832 U.S. seniors ranked at least one family practice program or an average of 4.6 programs per applicant. Table 10 also outlines the distribution of PGY-2 programs offered and filled for appointments beginning July 1994. Applicants matched to these positions will do a year of board clinical training, generally in a preliminary program such as Internal Medicine, General Surgery or Transitional. This year there were 413 programs offering 2,158 PGY-2 positions, up from 344 programs and 1,954 positions offered in last year's Match.

Table 11 reports the choices of U.S. seniors and

Independent Applicants by specialty. It includes the choices of all applicants without regard to whether the applicants were matched or unmatched. The specialty groups include all program tracks, as well as the advanced programs offered in each specialty. For example, Internal Medicine includes Preliminary, Primary and Categorical as well as Medicine-Pediatrics and Medicine-Psychiatry. A comparison of the total number of U.S. students choosing or ranking Plastic Surgery for example, reveals that there were three times as many U.S. senior applicants as there were positions. In contrast, there were over twice as many positions offered in Psychiatry than there were U.S. seniors seeking such a position.

Table 12 examines the population of U.S. seniors who chose to rank only one type of specialty. This includes 84.6% of all seniors submitting a Rank Order List. High unmatched rates, such as seen for Obstetrics and Gynecology (20.3%), Orthopedic Surgery (23.7%), Plastic Surgery (25.0%) and General Surgery (15.2%) reflect that there are more applicants than there are positions. It is understandable that their total PGY-1 "fill ratios" (Table 6) were 98.3%, 99.4%, 88.0% and 76.8% respectively.

Table 13 shows the number of U.S. seniors who matched to their first, second, third, fourth, fifth or lower ranked programs. The percentage of seniors matching to each of those choices has changed little in the history of the Match, in spite of efforts to encourage seniors to reach higher by ranking first their most desirable program without regard to whether or not they will be ranked highly by the program. One should also note that since 1991, Table 13 includes PGY-2 positions as well as PGY-1 and reflects the fact that in the 1993 Match, 1,248 seniors obtained PGY-1 as well as PGY-2 positions and both are included in the statistics.

Table 14 provides the total positions, both PGY-1 and PGY-2, offered by specialty and the number of applicants by type who matched in each state.

### **Additional Information**

Since May 1989, the Association of American Medical Colleges (AAMC) assumed the management responsibilities for the NRMP. As of July 1, 1992 the NRMP office in Evanston, Illinois was closed and the operation was moved and incorporated into the AAMC's Section for Student Services in Washington, D.C. Data derived from NRMP has been integrated into the AAMC's Student and Applicant Information Management System (SAIMS). Studies are routinely conducted on the characteristics and career development of graduates pursuing various specialties from the time they enter medical school through their post graduate training. Special data requests, pertaining to this or prior matches, can be accommodated and should be directed in writing to:

Richard R. Randlett  
Deputy Executive Director  
National Resident Matching Program  
2450 N Street, N.W., Suite 200  
Washington, D.C. 20037-1141

Telephone (202) 828-0620



TABLE 1

PGY-1 POSITIONS OFFERED IN THE MATCHING PROGRAM 1984 THROUGH 1993

	1984		1985		1986		1987		1988		1989		1990		1991		1992		1993	
	NO	%	NO	%	NO	%	NO	%	NO	%	NO	%	NO	%	NO	%	NO	%	NO	%
FAMILY PRACTICE	2,359	12.8	2,372	12.8	2,390	12.7	2,395	12.6	2,412	12.4	2,456	12.3	2,393	11.9	2,467	12.2	2,486	12.2	2,589	12.6
INTERNAL MEDICINE	6,579	35.6	6,736	36.3	6,912	36.8	7,076	37.2	7,272	37.3	7,467	37.4	7,442	37.0	7,403	36.7	7,403	36.3	7,409	36.0
PEDIATRICS	1,915	10.4	1,899	10.2	1,944	10.4	2,009	10.5	2,036	10.4	2,068	10.4	2,052	10.2	2,047	10.1	2,068	10.1	2,046	9.9
OBSTETRICS-GYNECOLOGY	1,014	5.5	1,021	5.5	1,048	5.6	1,031	5.4	1,043	5.3	1,061	5.3	1,076	5.4	1,080	5.3	1,109	5.4	1,139	5.5
PSYCHIATRY	879	4.8	902	4.9	932	5.0	987	5.2	1,097	5.6	1,095	5.5	1,135	5.6	1,100	5.4	1,082	5.3	1,056	5.1
MEDICAL SPECIALTY	90	0.5	91	0.5	80	0.4	73	0.4	69	0.4	72	0.4	81	0.4	74	0.4	61	0.3	59	0.3
DERMATOLOGY	6		5		9		7		7		9		15		14		14		15	
NEUROLOGY	59		59		50		47		42		44		51		45		38		39	
OPHTHALMOLOGY	25		27		21		19		20		19		15		15		9		5	
GENERAL SURGERY	2,330	12.6	2,310	12.5	2,322	12.4	2,282	12.0	2,270	11.6	2,218	11.1	2,255	11.2	2,234	11.1	2,203	10.8	2,203	10.7
SURGICAL SPECIALTY	532	2.9	530	2.9	504	2.7	537	2.8	601	3.1	632	3.2	633	3.1	647	3.2	685	3.4	708	3.4
NEUROLOGICAL SURGERY	35		35		31		32		30		33		38		38		29		34	
ORTHOPEDIC SURGERY	334		329		342		384		439		462		456		467		506		515	
OTOLARYNGOLOGY	47		46		42		40		49		50		52		56		52		51	
UROLOGY	111		112		83		74		77		79		79		77		84		83	
PLASTIC SURGERY	5		8		6		7		6		8		8		9		14		25	
SUPPORT SPECIALTY	1,546	8.4	1,468	7.9	1,449	7.7	1,447	7.6	1,449	7.4	1,598	8.0	1,706	8.5	1,824	9.0	1,973	9.7	2,061	10.0
ANESTHESIOLOGY	427		375		330		323		270		293		321		329		352		325	
EMERGENCY MEDICINE	209		234		270		298		326		376		440		482		569		677	
PATHOLOGY	479		468		477		471		443		475		486		513		518		517	
PHYSICAL MEDICINE	105		87		78		76		78		89		95		96		112		102	
PREVENTIVE MEDICINE	2		6		8		8		7		10		15		11		14		6	
DIAGNOSTIC RADIOLOGY	291		263		265		258		313		344		337		384		398		417	
RADIATION ONCOLOGY	30		33		21		13		9		10		6		3		5		10	
NUCLEAR MEDICINE	3		2		0		0		3		1		6		6		5		7	
TRANSITIONAL	1,213	6.6	1,206	6.5	1,189	6.3	1,210	6.4	1,264	6.5	1,288	6.5	1,328	6.6	1,316	6.5	1,324	6.5	1,328	6.4
TOTAL	18,457	100.0	18,535	100.0	18,770	100.0	19,047	100.0	19,513	100.0	19,955	100.0	20,101	100.0	20,192	100.0	20,394	100.0	20,598	100.0

TABLE 2

## APPLICANTS IN THE MATCHING PROGRAM 1984 THROUGH 1993

APPLICANTS	1984	1985	1986	1987	1988	1989	1990	1991	1992	1993
	NO.	%	NO.	%	NO.	%	NO.	%	NO.	%
U S SENIOR STUDENTS	16,130	100.0	16,179	100.0	15,981	100.0	15,776	100.0	15,438	100.0
WITHDREW	933	5.8	1,004	6.2	1,022	6.4	991	6.3	1,097	7.1
NO RANKINGS	456	2.8	326	2.0	222	1.4	272	1.7	224	1.5
ACTIVE APPLICANTS	14,741	100.0	14,849	100.0	14,737	100.0	14,466	100.0	14,117	100.0
MATCHED PGY-1	13,988	92.2	13,753	92.6	13,756	93.3	13,596	94.0	13,215	93.6
UNMATCHED PGY-1	1,153	7.8	1,096	7.4	981	6.7	870	6.0	902	6.4
CANADIAN STUDENTS	188	100.0	128	100.0	134	100.0	144	100.0	128	100.0
WITHDREW	24	12.8	16	12.5	23	17.2	18	12.5	40	31.3
NO RANKINGS	73	38.8	56	43.8	49	36.6	41	28.5	18	14.1
ACTIVE APPLICANTS	91	100.0	56	100.0	62	100.0	85	100.0	70	100.0
MATCHED PGY-1	74	81.3	47	83.9	49	79.0	74	87.1	55	78.6
UNMATCHED PGY-1	17	18.7	9	16.1	13	21.0	11	12.9	15	21.4
U S PHYSICIANS	1,427	100.0	1,547	100.0	1,757	100.0	1,858	100.0	2,012	100.0
WITHDREW	150	10.5	212	13.7	279	15.9	281	15.1	378	18.8
NO RANKINGS	509	35.7	502	32.4	527	30.0	670	36.1	624	31.0
ACTIVE APPLICANTS	768	100.0	833	100.0	931	100.0	907	100.0	1,010	100.0
MATCHED PGY-1	386	50.3	426	51.1	494	51.9	430	47.4	477	47.2
UNMATCHED PGY-1	382	49.7	407	48.9	457	48.1	477	52.6	533	52.8
OSTEOPATHS	414	100.0	631	100.0	774	100.0	884	100.0	1,272	100.0
WITHDREW	21	5.1	49	7.8	72	9.3	74	8.4	173	13.6
NO RANKINGS	187	45.2	234	37.1	300	38.8	293	33.1	303	23.5
ACTIVE APPLICANTS	206	100.0	348	100.0	402	100.0	517	100.0	685	100.0
MATCHED PGY-1	127	61.7	205	58.9	271	67.4	344	66.5	444	64.8
UNMATCHED PGY-1	79	38.0	143	41.1	131	32.6	173	33.5	241	35.2
5TH PATHWAY	425	100.0	407	100.0	305	100.0	210	100.0	171	100.0
WITHDREW	21	4.9	8	2.0	34	11.1	16	7.6	18	10.5
NO RANKINGS	65	15.3	47	11.5	31	10.2	24	11.4	22	12.9
ACTIVE APPLICANTS	339	100.0	352	100.0	240	100.0	170	100.0	131	100.0
MATCHED PGY-1	263	78.0	286	81.3	184	76.7	141	82.9	99	75.6
UNMATCHED PGY-1	76	22.4	66	18.8	56	23.3	29	17.1	32	24.4
U S FOREIGN GRADUATES	2,922	100.0	2,619	100.0	1,954	100.0	1,601	100.0	1,515	100.0
WITHDREW	300	10.3	404	15.4	208	10.6	149	9.3	241	15.9
NO RANKINGS	927	31.7	523	20.0	443	22.7	411	25.7	393	25.9
ACTIVE APPLICANTS	1,695	100.0	1,692	100.0	1,303	100.0	1,041	100.0	881	100.0
MATCHED PGY-1	752	44.4	671	39.7	503	38.6	448	43.0	470	53.3
UNMATCHED PGY-1	943	55.6	1,021	60.3	800	61.4	593	57.0	411	46.7
NON U S FOREIGN GRADUATES	7,143	100.0	6,943	100.0	5,705	100.0	4,444	100.0	4,094	100.0
WITHDREW	411	5.8	837	12.1	521	9.1	367	8.3	584	14.3
NO RANKINGS	2,520	35.3	1,850	26.6	1,522	26.7	1,209	27.2	1,048	25.7
ACTIVE APPLICANTS	4,212	100.0	4,256	100.0	3,662	100.0	2,868	100.0	2,313	100.0
MATCHED PGY-1	922	21.9	918	21.6	879	24.0	980	34.2	1,253	54.2
UNMATCHED PGY-1	3,290	78.1	3,338	78.4	2,783	76.0	1,888	65.8	1,060	45.8
TOTAL APPLICANTS	28,649	100.0	28,454	100.0	25,610	100.0	24,870	100.0	24,630	100.0
WITHDREW	1,860	6.5	2,330	8.9	2,159	8.1	1,896	7.6	2,408	9.8
NO RANKINGS	4,737	16.5	3,538	12.4	3,094	11.6	2,920	11.7	2,733	11.1
ACTIVE APPLICANTS	22,052	100.0	22,386	100.0	21,357	100.0	20,054	100.0	19,808	100.0
MATCHED PGY-1	16,112	73.1	16,306	72.8	16,136	75.6	16,013	79.8	15,912	83.7
UNMATCHED PGY-1	5,940	26.9	6,080	27.2	5,221	24.4	4,041	20.2	3,194	16.3

**TABLE 3**

**PGY-1 POSITIONS FOR APPLICANTS ACTIVE IN THE MATCH\***

YEAR	NUMBER OF POSITIONS	ACTIVE U.S. SENIORS	POSITIONS PER U.S. SENIOR	ACTIVE TOTAL	POSITIONS PER ACTIVE TOTAL
1971	16,515	8,417	2.0	9,004	1.8
1972	17,283	8,758	2.0	9,542	1.8
1973	18,721	9,525	2.0	11,286	1.7
1974	17,403	9,860	1.8	12,798	1.4
1975	15,691	10,802	1.5	14,153	1.1
1976	16,112	11,735	1.4	16,728	1.0
1977	16,574	11,898	1.4	15,854	1.0
1978	17,219	12,666	1.4	15,354	1.1
1979	17,824	13,036	1.4	14,985	1.2
1980	18,055	13,322	1.4	15,129	1.2
1981	18,331	13,705	1.3	16,104	1.1
1982	18,300	14,144	1.3	18,410	1.0
1983	17,952	13,969	1.3	20,044	0.9
1984	18,457	14,741	1.3	22,052	0.8
1985	18,535	14,849	1.2	22,386	0.8
1986	18,770	14,737	1.3	21,357	0.9
1987	19,047	14,466	1.3	20,054	0.9
1988	19,513	14,499	1.3	19,808	1.0
1989	19,955	14,117	1.4	19,207	1.0
1990	20,101	13,908	1.4	19,004	1.1
1991	20,192	13,943	1.4	18,450	1.1
1992	20,394	14,030	1.5	19,519	1.0
1993	20,598	14,094	1.5	20,916	1.0

\*Applicants who withdrew or did not rank programs are excluded.

**Positions per Active Applicants**

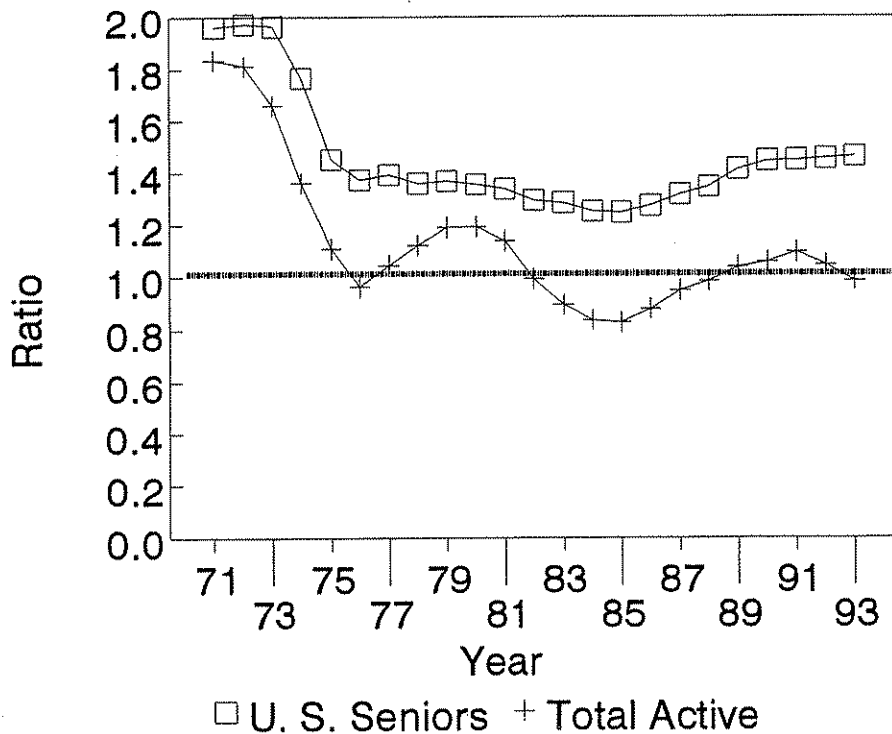


TABLE 4

## PGY-1 POSITIONS, ACTIVE APPLICANTS AND MATCH RATES

Year	Positions in NRMP	Total Active Applicants	% Positions/ Applicant	% Matched U S Seniors	% Matched Others	% Matched U S FMG	% Matched Non-U S FMG
1978	17,219	15,354	112.1	93.8	78.3		49.2
1979	17,824	14,985	118.9	93.1	79.9		59.1
1980	18,055	15,129	119.3	92.8	78.9		56.4
1981	18,331	16,104	113.8	92.8	74.5	67.5	45.3
1982	18,300	18,410	99.4	92.1	68.6	56.8	31.4
1983	17,952	20,044	89.6	92.2	65.2	49.3	26.2
1984	18,457	22,052	83.7	92.2	60.5	44.4	21.9
1985	18,535	22,386	82.8	92.6	60.7	39.7	21.6
1986	18,770	21,357	87.9	93.3	60.3	38.6	24.0
1987	19,047	20,054	95.0	94.0	58.9	43.0	34.2
1988	19,513	19,808	98.5	93.1	57.3	49.0	44.1
1989	19,955	19,207	103.9	93.6	56.7	53.3	54.2
1990	20,101	19,004	105.8	93.3	56.0	55.6	59.7
1991	20,192	18,450	109.4	93.1	54.5	58.6	63.4
1992	20,394	19,519	104.5	92.4	55.5	58.7	63.0
1993	20,598	20,916	98.5	92.4	53.0	57.2	58.4

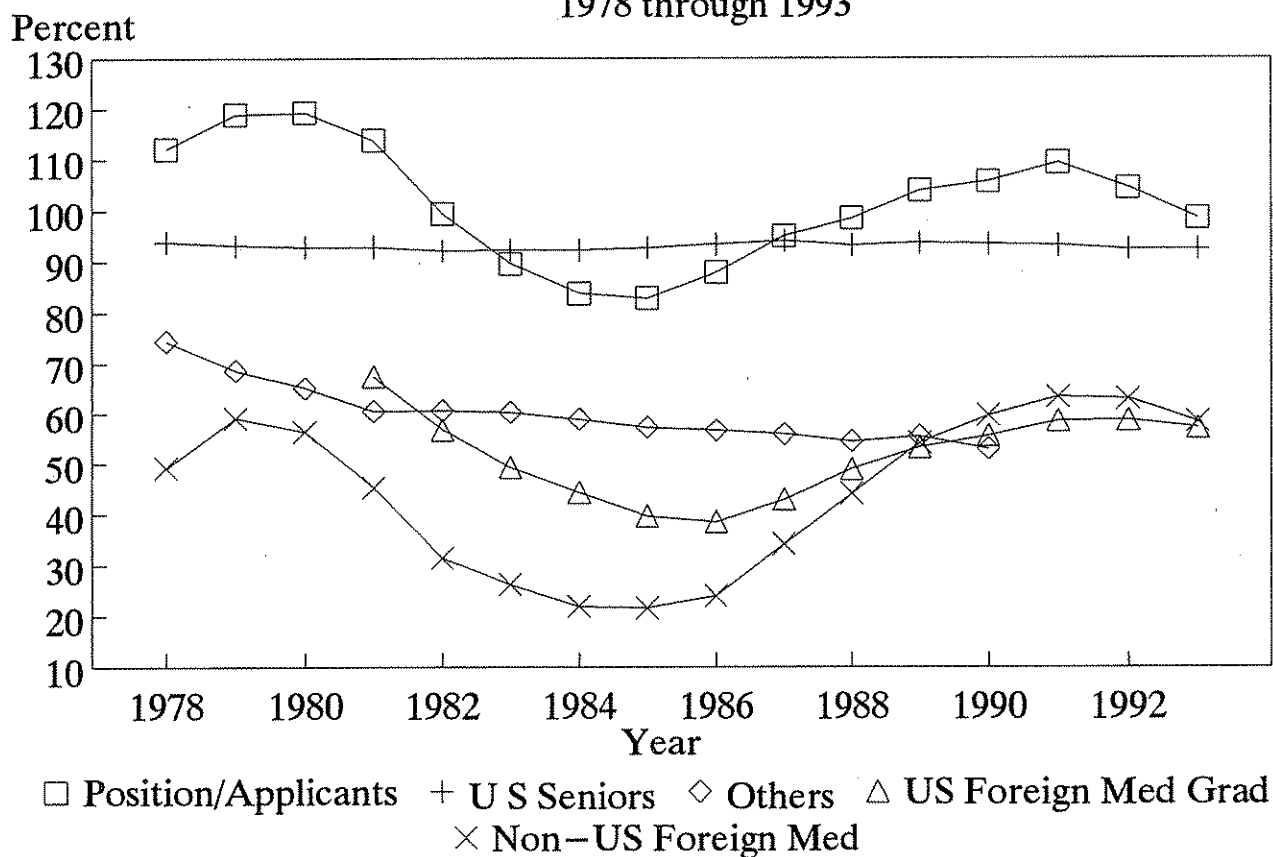
PGY-1 Positions and Match Rates  
1978 through 1993

TABLE 5

PGY-1 POSITIONS OFFERED AND FILLED IN THE MATCH BY U.S. SENIORS AND TOTAL APPLICANTS  
FROM 1987 THROUGH 1993

	1987			1988			1989			1990			1991			1992			1993		
	POSITIONS OFFERED	FILLED #U.S. #TOT	POSITIONS OFFERED	FILLED #U.S. #TOT	POSITIONS OFFERED	FILLED #U.S. #TOT	POSITIONS OFFERED	FILLED #U.S. #TOT	POSITIONS OFFERED	FILLED #U.S. #TOT	POSITIONS OFFERED	FILLED #U.S. #TOT	POSITIONS OFFERED	FILLED #U.S. #TOT	POSITIONS OFFERED	FILLED #U.S. #TOT	POSITIONS OFFERED	FILLED #U.S. #TOT	POSITIONS OFFERED	FILLED #U.S. #TOT	
FAMILY PRACTICE INTERNAL MEDICINE PEDIATRICS OBSTETRICS-GYNECOLOGY	2,395	1,728	1,979	2,412	1,494	1,767	2,456	1,468	1,745	2,393	1,418	1,685	2,467	1,374	1,604	2,486	1,398	1,678	2,589	1,636	2,002
	7,076	4,781	5,827	7,272	4,846	6,060	7,467	4,744	6,000	7,442	4,569	5,906	7,403	4,458	5,741	7,403	4,429	6,071	7,409	4,228	6,140
	2,009	1,366	1,730	2,036	1,313	1,659	2,068	1,256	1,654	2,052	1,286	1,669	2,047	1,318	1,614	2,068	1,325	1,695	2,046	1,361	1,777
	1,031	828	927	1,043	903	981	1,061	883	1,007	1,076	925	1,044	1,080	931	1,050	1,109	945	1,071	1,139	982	1,120
PSYCHIATRY	987	675	825	1,097	745	932	1,095	722	897	1,135	664	863	1,100	641	786	1,082	526	695	1,056	477	680
MEDICAL SPECIALTY DERMATOLOGY NEUROLOGY OPHTHALMOLOGY	73	50	59	69	48	58	72	45	53	81	38	53	74	47	54	61	27	37	59	38	44
	7	6	6	7	6	7	9	9	9	15	15	15	14	13	13	14	13	14	15	14	15
	47	30	37	42	24	32	44	22	29	51	15	28	45	23	28	38	11	20	39	19	24
	19	14	16	20	18	19	19	14	15	15	8	10	15	11	13	9	3	3	5	5	5
GENERAL SURGERY	2,282	1,703	1,896	2,270	1,647	1,835	2,218	1,532	1,724	2,255	1,501	1,708	2,234	1,522	1,736	2,203	1,528	1,782	2,203	1,399	1,691
SURGICAL SPECIALTY NEUROLOGICAL SURGERY ORTHOPEDIC SURGERY OTOLARYNGOLOGY UROLOGY PLASTIC SURGERY	537	469	521	601	538	579	632	547	599	633	539	605	647	555	606	685	597	656	708	608	675
	32	27	28	30	24	24	33	23	27	38	25	28	38	21	22	29	25	25	34	27	28
	384	335	376	439	402	438	462	415	457	456	400	453	467	411	458	506	455	502	515	453	512
	40	34	39	49	42	43	50	40	42	52	42	47	56	50	51	52	38	43	51	45	47
	74	66	71	77	64	68	79	63	65	79	65	69	77	65	66	84	69	72	83	61	66
	7	7	7	6	6	6	8	6	8	8	7	8	9	8	9	14	10	14	25	22	22
SUPPORT SPECIALTY ANESTHESIOLOGY EMERGENCY MEDICINE PATHOLOGY PHYSICAL MEDICINE PREVENTIVE MEDICINE DIAGNOSTIC RADIOLOGY RADIATION ONCOLOGY NUCLEAR MEDICINE	1,447	1,022	1,163	1,449	1,017	1,202	1,598	1,108	1,313	1,706	1,172	1,395	1,824	1,275	1,491	1,973	1,335	1,607	2,061	1,422	1,741
	323	249	262	270	219	235	293	200	214	321	251	264	329	247	266	352	244	273	325	199	235
	298	264	298	326	278	323	376	297	355	440	337	410	482	380	450	569	439	534	677	529	658
	471	209	276	443	184	252	475	253	305	486	243	292	513	270	319	518	254	319	517	278	349
	76	66	72	78	73	76	89	84	86	95	71	78	96	68	71	112	71	77	102	66	76
	8	2	4	7	4	5	10	2	2	15	5	6	11	3	3	14	5	6	6	1	3
	258	221	239	313	252	303	344	262	341	337	258	336	384	302	374	398	316	390	417	341	408
	13	11	12	9	7	7	10	9	9	6	5	5	3	3	3	5	4	5	10	5	8
	0	0	0	3	0	1	1	1	1	6	2	4	6	2	5	5	2	3	7	3	4
TRANSITIONAL	1,210	974	1,086	1,264	945	1,046	1,288	910	1,021	1,328	864	984	1,316	864	985	1,324	847	971	1,328	869	1,026
TOTAL	19,047	13,596	16,013	19,513	13,496	16,119	19,955	13,215	16,013	20,101	12,976	15,912	20,192	12,985	15,667	20,394	12,957	16,263	20,598	13,020	16,896

TABLE 6

PGY-1 POSITIONS OFFERED AND PERCENT FILLED IN THE MATCH BY U.S. SENIORS AND TOTAL APPLICANTS  
FROM 1987 THROUGH 1993

	1987			1988			1989			1990			1991			1992			1993		
	POSITIONS OFFERED	FILLED % US % TOT	POSITIONS OFFERED	FILLED % US % TOT	POSITIONS OFFERED	FILLED % US % TOT	POSITIONS OFFERED	FILLED % US % TOT	POSITIONS OFFERED	FILLED % US % TOT	POSITIONS OFFERED	FILLED % US % TOT	POSITIONS OFFERED	FILLED % US % TOT	POSITIONS OFFERED	FILLED % US % TOT	POSITIONS OFFERED	FILLED % US % TOT			
FAMILY PRACTICE INTERNAL MEDICINE PEDIATRICS OBSTETRICS-GYNECOLOGY	2,395	72.2	82.6	2,412	61.9	73.3	2,456	59.8	71.1	2,393	59.3	70.4	2,467	55.7	65.0	2,486	56.2	67.5	2,589	63.2	77.3
	7,076	67.6	82.3	7,272	66.6	83.3	7,467	63.5	80.4	7,442	61.4	79.4	7,403	60.2	77.5	7,403	59.8	82.0	7,409	57.1	82.9
	2,009	68.0	86.1	2,036	64.5	81.5	2,068	60.7	80.0	2,052	62.7	81.3	2,047	64.4	78.8	2,068	64.1	82.0	2,046	66.5	86.9
	1,031	80.3	89.9	1,043	86.6	94.1	1,061	83.2	94.9	1,076	86.0	97.0	1,080	86.2	97.2	1,109	85.2	96.6	1,139	86.2	98.3
PSYCHIATRY	987	68.4	83.6	1,097	67.9	85.0	1,095	65.9	81.9	1,135	58.5	76.0	1,100	58.3	71.5	1,082	48.6	64.2	1,056	45.2	64.4
MEDICAL SPECIALTY DERMATOLOGY NEUROLOGY OPHTHALMOLOGY	73	68.5	80.8	69	69.6	84.1	72	62.5	73.6	81	46.9	65.4	74	63.5	73.0	61	44.3	60.7	59	64.4	74.6
	7	85.7	85.7	7	85.7	100.0	9	100.0	100.0	15	100.0	100.0	14	92.9	92.9	14	92.9	100.0	15	93.3	100.0
	47	63.8	78.7	42	57.1	76.2	44	50.0	65.9	51	29.4	54.9	45	51.1	62.2	38	28.9	52.6	39	48.7	61.5
	19	73.7	84.2	20	90.0	95.0	19	73.7	78.9	15	53.3	66.7	15	73.3	86.7	9	33.3	33.3	5	100.0	100.0
GENERAL SURGERY	2,282	74.6	83.1	2,270	72.6	80.8	2,218	69.1	77.7	2,255	66.6	75.7	2,234	68.1	77.7	2,203	69.4	80.9	2,203	63.5	76.8
SURGICAL SPECIALTY NEUROLOGICAL SURGERY ORTHOPEDIC SURGERY OTOLARYNGOLOGY	537	87.3	97.0	601	89.5	96.3	632	86.6	94.8	633	85.2	95.6	647	85.8	93.7	685	87.2	95.8	708	85.9	95.3
	32	84.4	87.5	30	80.0	80.0	33	69.7	81.8	38	65.8	73.7	38	55.3	57.9	29	86.2	86.2	34	79.4	82.4
	384	87.2	97.9	439	91.6	99.8	462	89.8	98.9	456	87.7	99.3	467	88.0	98.1	506	89.9	99.2	515	88.0	99.4
	40	85.0	97.5	49	85.7	87.8	50	80.0	84.0	52	80.8	90.4	56	89.3	91.1	52	73.1	82.7	51	88.2	92.2
UROLOGY	74	89.2	95.9	77	83.1	88.3	79	79.7	82.3	79	82.3	87.3	77	84.4	85.7	84	82.1	85.7	83	73.5	79.5
PLASTIC SURGERY	7	100.0	100.0	6	100.0	100.0	8	75.0	100.0	8	87.5	100.0	9	88.9	100.0	14	71.4	100.0	25	88.0	88.0
SUPPORT SPECIALTY ANESTHESIOLOGY EMERGENCY MEDICINE PATHOLOGY	1,447	70.6	80.4	1,449	70.2	83.0	1,598	69.3	82.2	1,706	68.7	81.8	1,824	69.9	81.7	1,973	67.7	81.4	2,061	69.0	84.5
	323	77.1	81.1	270	81.1	87.0	293	68.3	73.0	321	78.2	82.2	329	75.1	80.9	352	69.3	77.6	325	61.2	72.3
	298	88.6	100.0	326	85.3	99.1	376	79.0	94.4	440	76.6	93.2	482	78.8	93.4	569	77.2	93.8	677	78.1	97.2
	471	44.4	58.6	443	41.5	56.9	475	53.3	64.2	486	50.0	60.1	513	52.6	62.2	518	49.0	61.6	517	53.8	67.5
PHYSICAL MEDICINE PREVENTIVE MEDICINE	76	86.8	94.7	78	93.6	97.4	89	94.4	96.6	95	74.7	82.1	96	70.8	74.0	112	63.4	68.8	102	64.7	74.5
	8	25.0	50.0	7	57.1	71.4	10	20.0	20.0	15	33.3	40.0	11	27.3	27.3	14	35.7	42.9	6	16.7	50.0
DIAGNOSTIC RADIOLOGY	258	85.7	92.6	313	80.5	96.8	344	76.2	99.1	337	76.6	99.7	384	78.6	97.4	398	79.4	98.0	417	81.8	97.8
RADIATION ONCOLOGY	13	84.6	92.3	9	77.8	77.8	10	90.0	90.0	6	83.3	83.3	3	100.0	100.0	5	80.0	100.0	10	50.0	80.0
NUCLEAR MEDICINE	0	0.0	0.0	3	0.0	33.3	1	100.0	100.0	6	33.3	66.7	6	33.3	83.3	5	40.0	60.0	7	42.9	57.1
TRANSITIONAL	1,210	80.5	89.8	1,264	74.8	82.8	1,288	70.7	79.3	1,328	65.1	74.1	1,316	65.7	74.8	1,324	64.0	73.3	1,328	65.4	77.3

# TABLE 7

TOTAL APPLICANTS MATCHED TO PGY-1 BY SPECIALTY FROM 1984 THROUGH 1993

	1984		1985		1986		1987		1988		1989		1990		1991		1992		1993	
	NO.	%	NO.	%	NO.	%	NO.	%	NO.	%	NO.	%	NO.	%	NO.	%	NO.	%	NO.	%
FAMILY PRACTICE	2,011	12.5	1,898	11.6	1,960	12.1	1,979	12.4	1,767	11.0	1,745	10.9	1,685	10.6	1,604	10.2	1,678	10.3	2,002	11.8
INTERNAL MEDICINE	5,767	35.8	6,096	37.4	5,985	37.1	5,827	36.4	6,060	37.6	6,000	37.5	5,906	37.1	5,741	36.6	6,071	37.3	6,140	36.3
PEDIATRICS	1,683	10.4	1,690	10.4	1,723	10.7	1,730	10.8	1,659	10.3	1,654	10.3	1,669	10.5	1,614	10.3	1,695	10.4	1,777	10.5
OBSTETRICS-GYNECOLOGY	979	6.1	969	5.9	974	6.0	927	5.8	981	6.1	1,007	6.3	1,044	6.6	1,050	6.7	1,071	6.6	1,120	6.6
PSYCHIATRY	661	4.1	739	4.5	782	4.8	825	5.2	932	5.8	897	5.6	863	5.4	786	5.0	695	4.3	680	4.0
MEDICAL SPECIALTY	64	0.4	67	0.4	52	0.3	59	0.4	58	0.4	53	0.3	53	0.3	54	0.3	37	0.2	44	0.3
DERMATOLOGY	5		5		5		6		7		9		15		13		14		15	
NEUROLOGY	36		37		29		37		32		29		28		28		20		24	
OPHTHALMOLOGY	23		25		18		16		19		15		10		13		3		5	
GENERAL SURGERY	2,095	13.0	2,053	12.6	1,994	12.4	1,896	11.8	1,835	11.4	1,724	10.8	1,708	10.7	1,736	11.1	1,782	11.0	1,691	10.0
SURGICAL SPECIALTY	511	3.2	509	3.1	494	3.1	521	3.3	579	3.6	599	3.7	605	3.8	606	3.9	656	4.0	675	4.0
NEUROLOGICAL SURGERY	27		31		29		28		24		27		28		22		25		28	
ORTHOPEDIC SURGERY	325		325		342		376		438		457		453		458		502		512	
OTOLARYNGOLOGY	45		40		40		39		43		42		47		51		43		47	
UROLOGY	109		107		77		71		68		65		69		66		72		66	
PLASTIC SURGERY	5		6		6		7		6		8		8		9		14		22	
SUPPORT SPECIALTY	1,280	7.9	1,199	7.4	1,150	7.1	1,163	7.3	1,202	7.5	1,313	8.2	1,395	8.8	1,491	9.5	1,607	9.9	1,741	10.3
ANESTHESIOLOGY	386		349		280		262		235		214		264		266		273		235	
EMERGENCY MEDICINE	205		232		266		298		323		355		410		450		534		658	
PATHOLOGY	329		281		276		276		252		305		292		319		319		349	
PHYSICAL MEDICINE	74		73		68		72		76		86		78		71		77		76	
PREVENTIVE MEDICINE	0		3		5		4		5		2		6		3		6		3	
DIAGNOSTIC RADIOLOGY	271		236		241		239		303		341		336		374		390		408	
RADIATION ONCOLOGY	14		25		14		12		7		9		5		3		5		8	
NUCLEAR MEDICINE	1		0		0		0		1		1		4		5		3		4	
TRANSITIONAL	1,061	6.6	1,086	6.7	1,022	6.3	1,086	6.8	1,046	6.5	1,021	6.4	984	6.2	985	6.3	971	6.0	1,026	6.1
TOTAL	16,112	100.0	16,306	100.0	16,136	100.0	16,013	100.0	16,119	100.0	16,013	100.0	15,912	100.0	15,667	100.0	16,263	100.0	16,896	100.0

TABLE 8

U S SENIORS MATCHED TO PGY-1 BY SPECIALTY FROM 1984 THROUGH 1993

	1984		1985		1986		1987		1988		1989		1990		1991		1992		1993	
	NO.	%	NO.	%	NO.	%	NO.	%	NO.	%	NO.	%	NO.	%	NO.	%	NO.	%	NO.	%
FAMILY PRACTICE	1,773	13.0	1,626	11.8	1,680	12.2	1,728	12.7	1,494	11.1	1,468	11.1	1,418	10.9	1,374	10.6	1,398	10.8	1,636	12.6
INTERNAL MEDICINE	4,779	35.2	4,997	36.3	4,994	36.3	4,781	35.2	4,846	35.9	4,744	35.9	4,569	35.2	4,458	34.3	4,429	34.2	4,228	32.5
PEDIATRICS	1,271	9.4	1,287	9.4	1,366	9.9	1,366	10.0	1,313	9.7	1,256	9.5	1,286	9.9	1,318	10.2	1,325	10.2	1,361	10.5
OBSTETRICS-GYNECOLOGY	844	6.2	828	6.0	866	6.3	828	6.1	903	6.7	883	6.7	925	7.1	931	7.2	945	7.3	982	7.5
PSYCHIATRY	497	3.7	600	4.4	651	4.7	675	5.0	745	5.5	722	5.5	664	5.1	641	4.9	526	4.1	477	3.7
MEDICAL SPECIALTY	56	0.4	63	0.5	44	0.3	50	0.4	48	0.4	45	0.3	38	0.3	47	0.4	27	0.2	38	0.3
DERMATOLOGY	5		5		5		6		6		9		15		13		13		14	
NEUROLOGY	30		35		22		30		24		22		15		23		11		19	
OPHTHALMOLOGY	21		23		17		14		18		14		8		11		3		5	
GENERAL SURGERY	1,831	13.5	1,862	13.5	1,796	13.1	1,703	12.5	1,647	12.2	1,532	11.6	1,501	11.6	1,522	11.7	1,528	11.8	1,399	10.7
SURGICAL SPECIALTY	470	3.5	461	3.4	450	3.3	469	3.4	538	4.0	547	4.1	539	4.2	555	4.3	597	4.6	608	4.7
NEUROLOGICAL SURGERY	25		29		27		27		24		23		25		21		25		27	
ORTHOPEDIC SURGERY	294		287		307		335		402		415		400		411		455		453	
OTO LARYNGOLOGY	43		39		39		34		42		40		42		50		38		45	
UROLOGY	103		100		71		66		64		63		65		65		69		61	
PLASTIC SURGERY	5		6		6		7		6		6		7		8		10		22	
SUPPORT SPECIALTY	1,151	8.5	1,057	7.7	1,007	7.3	1,022	7.5	1,017	7.5	1,108	8.4	1,172	9.0	1,275	9.8	1,335	10.3	1,422	10.9
ANESTHESIOLOGY	368		339		268		249		219		200		251		247		244		199	
EMERGENCY MEDICINE	189		221		242		264		278		297		337		380		439		529	
PATHOLOGY	263		190		197		209		184		253		243		270		254		278	
PHYSICAL MEDICINE	65		62		63		66		73		84		71		68		71		66	
PREVENTIVE MEDICINE	0		3		1		2		4		2		5		3		5		1	
DIAGNOSTIC RADIOLOGY	252		219		223		221		252		262		258		302		316		341	
RADIATION ONCOLOGY	13		23		13		11		7		9		5		3		4		5	
NUCLEAR MEDICINE	1		0		0				0		1		2		2		2		3	
TRANSITIONAL	916	6.7	972	7.1	902	6.6	974	7.2	945	7.0	910	6.9	864	6.7	864	6.7	847	6.5	869	6.7
TOTAL	13,588	100.0	13,753	100.0	13,756	100.0	13,596	100.0	13,496	100.0	13,215	100.0	12,976	100.0	12,985	100.0	12,957	100.0	13,020	100.0



TABLE 9

FOREIGN TRAINED PHYSICIANS\* MATCHED TO PGY-1 BY SPECIALTY FROM 1984 THROUGH 1993

	1984		1985		1986		1987		1988		1989		1990		1991		1992		1993	
	NO.	%	NO.	%	NO.	%	NO.	%	NO.	%	NO.	%	NO.	%	NO.	%	NO.	%	NO.	%
FAMILY PRACTICE	155	9.3	144	9.1	100	7.2	83	5.8	101	6.2	115	6.7	112	6.0	124	7.0	180	7.6	229	7.9
INTERNAL MEDICINE	687	41.0	737	46.4	644	46.6	708	49.6	906	56.0	950	55.1	1,046	56.5	1,062	59.6	1,397	58.8	1,670	57.8
PEDIATRICS	336	20.1	326	20.5	287	20.8	284	19.9	270	16.7	317	18.4	301	16.3	222	12.5	316	13.3	354	12.2
OBSTETRICS - GYNECOLOGY	51	3.0	30	1.9	29	2.1	30	2.1	27	1.7	41	2.4	33	1.8	24	1.3	32	1.3	46	1.6
PSYCHIATRY	129	7.7	108	6.8	100	7.2	105	7.4	118	7.3	110	6.4	127	6.9	79	4.4	112	4.7	155	5.4
MEDICAL SPECIALTY	4	0.2	1	0.1	6	0.4	7	0.5	6	0.4	4	0.2	11	0.6	5	0.3	6	0.3	5	0.2
DERMATOLOGY	0		0		0		0		1		0		0		0		0		0	
NEUROLOGY	3		1		5		5		5		3		9		4		6		5	
OPHTHALMOLOGY	1		0		1		2		0		1		2		1		0		0	
GENERAL SURGERY	130	7.8	78	4.9	64	4.6	66	4.6	59	3.6	66	3.8	95	5.1	128	7.2	156	6.6	172	6.0
SURGICAL SPECIALTY	4	0.2	5	0.3	5	0.4	3	0.2	0	0.0	3	0.2	5	0.3	4	0.2	8	0.3	9	0.3
NEUROLOGICAL SURGERY	0		0		2		0		0		1		1		1		0		0	
ORTHOPEDIC SURGERY	3		3		3		3		0		2		1		3		6		7	
OTOLARYNGOLOGY	0		1		0		0		0		0		2		0		1		0	
UROLOGY	1		1		0		0		0		0		0		0		1		2	
PLASTIC SURGERY	0		0		0		0		0		0		1		0		0		0	
SUPPORT SPECIALTY	78	4.7	85	5.3	72	5.2	70	4.9	65	4.0	47	2.7	46	2.5	55	3.1	91	3.8	125	4.3
ANESTHESIOLOGY	10		3		6		8		12		9		8		10		21		31	
EMERGENCY MEDICINE	6		2		1		2		1		6		5		3		9		21	
PATHOLOGY	50		73		57		50		49		26		29		35		47		56	
PHYSICAL MEDICINE	6		6		4		3		1		0		1		1		0		4	
PREVENTIVE MEDICINE	0		0		0		0		1		0		1		0		1		2	
DIAGNOSTIC RADIOLOGY	6		1		3		4		1		6		2		6		12		10	
RADIATION ONCOLOGY	0		0		1		1		0		0		0		0		1		1	
NUCLEAR MEDICINE	0		0		0		0		0		0		0		0		0		0	
TRANSITIONAL	100	6.0	75	4.7	75	5.4	72	5.0	67	4.1	70	4.1	76	4.1	80	4.5	76	3.2	125	4.3
TOTAL	1,674	100.0	1,589	100.0	1,382	100.0	1,428	100	1,619	100.0	1,723	100.0	1,852	100.0	1,783	100.0	2,374	100.0	2,890	100.0

\*Excludes Canadian and 5th Pathway Applicants

TABLE 10

PROGRAMS, POSITIONS, RANKED AND FILLED IN 1993  
U.S. SENIOR STUDENTSPROGRAMS, POSITIONS, RANKED AND FILLED IN 1993  
TOTAL APPLICANTS

PROGRAM NAME	PROGRAM CODE	# OF PROGRAMS	POSITIONS OFFERED	RANKED POSITIONS	RANK/ POSITION	MATCHED	% FILLED
PGY-1 PROGRAMS							
FAMILY PRACTICE	C-20	388	2,589	11,271	4.4	2,002	77.3
INTERNAL MEDICINE	C-16	381	4,658	32,086	6.9	4,104	88.1
PRELIMINARY	P-15	285	2,053	9,544	4.6	1,487	72.4
PRIMARY	C-17	78	377	2,323	6.2	319	84.6
MEDICINE-PEDIATRICS	C-30	82	301	1,123	3.7	224	74.4
MEDICINE-PSYCHIATRY	C-22	8	20	28	1.4	6	30.0
OBSTETRICS/GYNECOLOGY	C-23	257	1,139	13,226	11.6	1,120	98.3
PATHOLOGY	C-25	162	517	2,059	4.0	349	67.5
PEDIATRICS	C-28	212	2,005	11,213	5.6	1,745	87.0
PRIMARY	C-29	7	38	278	7.3	29	76.3
PEDS/PSYCH/CHILD PSYCH	C-48	4	3	20	6.7	3	100.0
SURGERY-GENERAL	C-19	251	1,053	14,330	13.6	1,043	99.1
PRELIMINARY	P-18	213	1,150	2,802	2.4	648	56.3
TRANSITIONAL	P-14	157	1,328	5,653	4.3	1,026	77.3
ANESTHESIOLOGY	C-31	72	325	1,782	5.5	235	72.3
DERMATOLOGY	C-32	6	15	97	6.5	15	100.0
EMERGENCY MEDICINE	C-33	92	677	5,236	7.7	658	97.2
NEUROSURGERY	C-34	22	34	48	1.4	28	82.4
NEUROLOGY	C-35	17	39	40	1.0	24	61.5
NUCLEAR MEDICINE	C-36	4	7	24	3.4	4	57.1
OPHTHALMOLOGY	C-37	4	5	9	1.8	5	100.0
ORTHOPAEDIC SURGERY	C-38	135	515	6,418	12.5	512	99.4
OTOLARYNGOLOGY	C-39	22	51	51	1.0	47	92.2
PHYSICAL MEDICINE	C-40	40	102	535	5.2	76	74.5
PLASTIC SURGERY	C-49	17	25	215	8.6	22	88.0
PREVENTIVE MEDICINE	C-47	4	6	12	2.0	3	50.0
PSYCHIATRY	C-41	187	1,056	3,639	3.4	680	64.4
RADIOLOGY-DIAGNOSTIC	C-42	110	417	4,357	10.4	408	97.8
RADIATION-ONCOLOGY	C-43	6	10	53	5.3	8	80.0
UROLOGY	C-44	41	83	87	1.0	66	79.5
TOTAL PGY-1		3,264	20,598	128,559	6.2	16,896	82.0
PGY-2 PROGRAMS							
ANESTHESIOLOGY	S-51	126	1,094	4,227	3.9	708	64.7
DERMATOLOGY	S-52	1	2	19	9.5	2	100.0
EMERGENCY MEDICINE	S-53	17	138	907	6.6	123	89.1
NEUROLOGICAL SURGERY	S-54	2	2	0	0.0	0	0.0
ORTHOPAEDIC SURGERY	S-58	15	37	467	12.6	37	100.0
PHYSICAL MEDICINE	S-60	45	189	1,098	5.8	162	85.7
PREVENTIVE MEDICINE	S-67	4	8	1	0.1	0	0.0
PSYCHIATRY	S-61	30	101	338	3.3	52	51.5
RADIOLOGY-DIAGNOSTIC	S-62	113	458	4,537	9.9	420	91.7
RADIATION-ONCOLOGY	S-63	60	129	785	6.1	104	80.6
TOTAL PGY-2		413	2,158	12,379	5.7	1,608	74.5
GRAND TOTAL		3,677	22,756	140,938	6.2	18,504	81.3

TABLE 11

U.S. STUDENT CHOICES BY SPECIALTY  
NRMP 1993

DESCRIPTION	ONLY CHOICE	FIRST CHOICE	NOT FIRST CHOICE	TOTAL U.S. STUDENTS	TOTAL POSITIONS	POSITIONS PER STUDENT
ANESTHESIOLOGY	581	255	33	869	1,419	1.6
DERMATOLOGY	0	51	7	58	17	0.3
EMERGENCY MEDICINE	530	166	38	734	815	1.1
FAMILY PRACTICE	1,540	128	164	1,832	2,589	1.4
INTERNAL MEDICINE	3,198	333	1,015	4,546	7,409	1.6
NEUROLOGICAL SURGERY	25	2	0	27	36	1.3
NEUROLOGY	16	2	5	23	39	1.7
NUCLEAR MEDICINE	0	1	15	16	7	0.4
OBSTETRICS-GYNECOLOGY	1,150	120	26	1,296	1,139	0.9
OPHTHALMOLOGY	3	2	3	8	5	0.6
ORTHOPEDIC SURGERY	482	239	22	743	552	0.7
OTOLARYNGOLOGY	43	1	1	45	51	1.1
PATHOLOGY	258	14	17	289	517	1.8
PEDIATRICS	1,305	56	111	1,472	2,046	1.4
PHYS MEDICINE & REHAB	130	63	17	210	291	1.4
PLASTIC SURGERY	4	45	26	75	25	0.3
PREVENTIVE MED/PUBLIC HLTH	1	0	2	3	14	4.7
PSYCHIATRY	484	48	31	563	1,157	2.1
DIAGNOSTIC RADIOLOGY	472	348	26	846	875	1.0
RADIATION ONCOLOGY	55	45	7	107	139	1.3
GENERAL SURGERY	1,448	82	297	1,827	2,203	1.2
UROLOGY	59	2	2	63	83	1.3
TRANSITIONAL	140	167	745	1,052	1,328	1.3
TOTAL	11,924	2,170			22,756	

INDEPENDENT APPLICANT (I.A.) CHOICES BY SPECIALTY  
NRMP 1993

DESCRIPTION	ONLY CHOICE	FIRST CHOICE	NOT FIRST CHOICE	TOTAL I.A.'S	TOTAL POSITIONS	POSITIONS PER TOTAL APPLICANT*
ANESTHESIOLOGY	86	102	62	250	1,419	1.3
DERMATOLOGY	3	1	2	6	17	0.3
EMERGENCY MEDICINE	229	49	92	370	815	0.7
FAMILY PRACTICE	271	236	464	971	2,589	0.9
INTERNAL MEDICINE	2,039	750	819	3,608	7,409	0.9
NEUROLOGICAL SURGERY	2	1	2	5	36	1.1
NEUROLOGY	2	5	7	14	39	1.1
NUCLEAR MEDICINE	1	0	6	7	7	0.3
OBSTETRICS-GYNECOLOGY	365	104	89	558	1,139	0.6
OPHTHALMOLOGY	0	0	1	1	5	0.6
ORTHOPEDIC SURGERY	204	68	23	295	552	0.5
OTOLARYNGOLOGY	2	1	0	3	51	1.1
PATHOLOGY	86	34	96	216	517	1.0
PEDIATRICS	397	183	420	1,000	2,046	0.8
PHYS MEDICINE & REHAB	63	26	20	109	291	0.9
PLASTIC SURGERY	0	6	10	16	25	0.3
PREVENTIVE MED/PUBLIC HEALTH	0	2	6	8	14	1.3
PSYCHIATRY	153	98	143	394	1,157	1.2
DIAGNOSTIC RADIOLOGY	274	53	32	359	875	0.7
RADIATION ONCOLOGY	34	6	3	43	139	0.9
GENERAL SURGERY	533	189	193	915	2,203	0.8
UROLOGY	6	3	5	14	83	1.1
TRANSITIONAL	44	111	449	604	1,328	0.8
TOTAL	4,794	2,028			22,756	

\* TOTAL APPLICANTS INCLUDES TOTALS OF BOTH U.S. STUDENTS AND INDEPENDENT APPLICANTS.

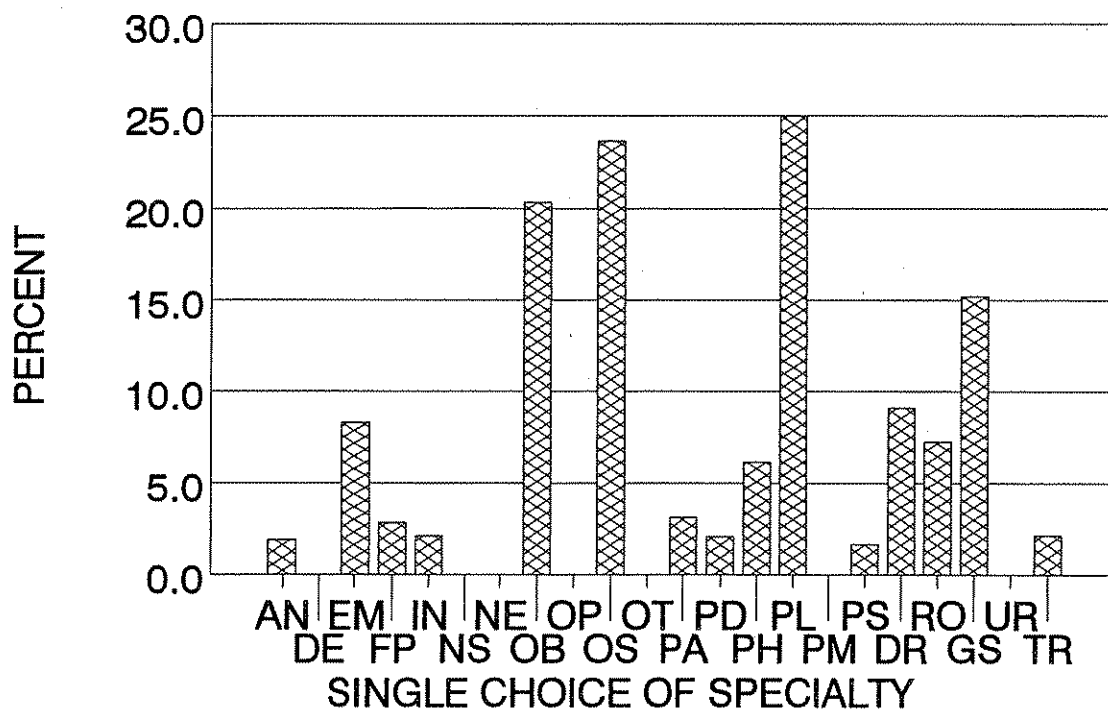
**TABLE 12**

**U S SENIORS WHO MADE CHOICES  
FOR ONE TYPE OF SPECIALTY 1N 1993\***

	MATCHED	UNMATCHED	TOTAL	PERCENT	PERCENT UNMATCHED
ANESTHESIOLOGY	570	11	581	4.9	1.9
DERMATOLOGY	0	0	0	0.0	0.0
EMERGENCY MEDICINE	486	44	530	4.4	8.3
FAMILY PRACTICE	1,496	44	1,540	12.9	2.9
INTERNAL MEDICINE	3,131	67	3,198	26.8	2.1
NEUROLOGICAL SURGERY	25	0	25	0.2	0.0
NEUROLOGY	16	0	16	0.1	0.0
OBSTETRICS--GYNECOLOGY	916	234	1,150	9.6	20.3
OPHTHALMOLOGY	3	0	3	0.0	0.0
ORTHOPEDIC SURGERY	368	114	482	4.0	23.7
OTOLARYNGOLOGY	43	0	43	0.4	0.0
PATHOLOGY	250	8	258	2.2	3.1
PEDIATRICS	1,278	27	1,305	10.9	2.1
PHYS MEDICINE & REHAB	122	8	130	1.1	6.2
PLASTIC SURGERY	3	1	4	0.0	25.0
PREVENTIVE MED/PUBLIC HLTH	1	0	1	0.0	0.0
PSYCHIATRY	476	8	484	4.1	1.7
DIAGNOSTIC RADIOLOGY	429	43	472	4.0	9.1
RADIATION ONCOLOGY	51	4	55	0.5	7.3
GENERAL SURGERY	1,228	220	1,448	12.1	15.2
UROLOGY	59	0	59	0.5	0.0
TRANSITIONAL	137	3	140	1.2	2.1
<b>TOTAL</b>	<b>11,088</b>	<b>836</b>	<b>11,924</b>	<b>100.0</b>	<b>7.0</b>

\* 84.6 PERCENT OF ACTIVE SENIORS

**U. S. SENIORS  
UNMATCHED IN 1993**



# TABLE 13

## MATCH RESULTS FOR U.S. MEDICAL SCHOOL SENIORS 1986 – 1993 RANK NUMBER OBTAINED\*

YEAR	FIRST CHOICE	PERCENT	SECOND CHOICE	PERCENT	THIRD CHOICE	PERCENT	FOURTH CHOICE	PERCENT	>FOURTH CHOICE	PERCENT	TOTAL MATCHED	PERCENT	TOTAL UNMATCHED	PERCENT
1986	7,876	53.4	2,206	15.0	1,264	8.6	821	5.6	1,589	10.8	13,756	93.3	981	6.7
1987	8,060	55.7	2,231	15.4	1,235	8.5	706	4.9	1,364	9.4	13,596	94.0	870	6.0
1988	7,994	55.1	2,224	15.3	1,227	8.5	673	4.6	1,378	9.5	13,496	93.1	1,003	6.9
1989	8,252	58.5	2,091	14.8	1,079	7.6	604	4.3	1,189	8.4	13,215	93.6	902	6.4
1990	8,141	58.5	2,079	14.9	1,054	7.6	592	4.3	1,110	8.0	12,976	93.3	932	6.7
1991	9,169	60.0	2,172	14.2	1,125	7.4	696	4.6	1,165	7.6	14,327	93.7	958	6.3
1992	9,079	59.2	2,208	14.4	1,065	6.9	648	4.2	1,256	8.2	14,256	93.0	1,073	7.0
1993	9,264	59.9	2,160	14.0	1,120	7.2	638	4.1	1,213	7.8	14,395	93.1	1,075	6.9

\*Prior to 1991 only PGY-1 positions included in statistics

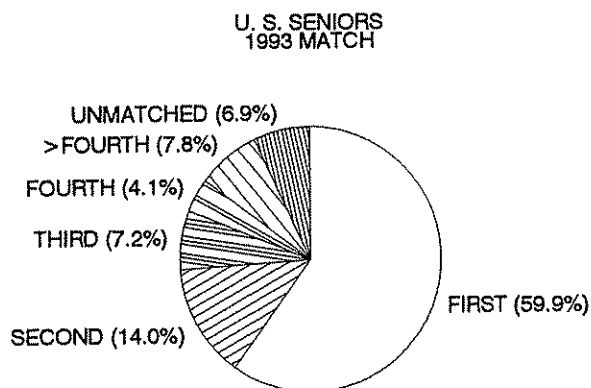
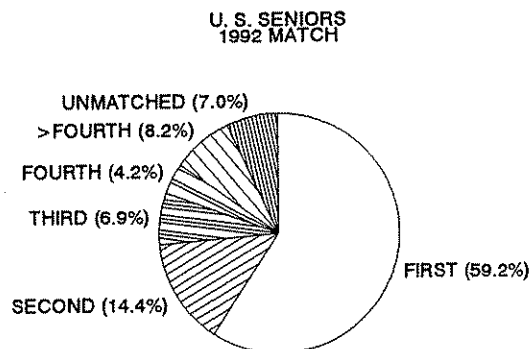
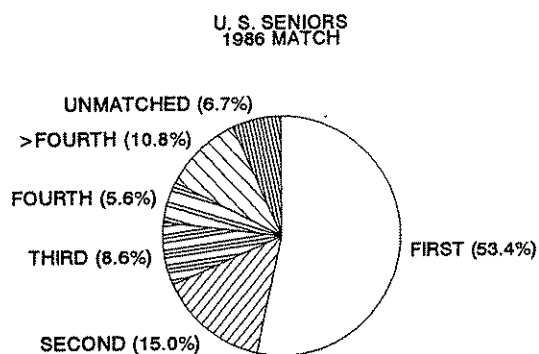


TABLE 14

**ANESTHESIOLOGY - 1993**  
Positions Offered and Filled in NRMP

ST	POSITIONS	USG	USMD	STHPW	USFMG	OSTEO	CANADA	ALFMG	%USG	%TOT
AL	13	13	0	0	0	0	0	3	68.4	84.2
AR	6	6	0	0	0	0	0	0	100.0	100.0
AZ	16	9	0	0	0	0	0	0	56.3	56.3
CA	149	113	4	0	1	0	0	4	75.8	81.9
CO	11	10	0	0	0	1	0	0	90.9	100.0
CT	29	15	0	0	0	2	0	0	51.7	58.6
DC	20	12	0	0	0	1	0	0	60.0	65.0
FL	69	47	1	0	1	2	0	2	68.1	76.8
GA	31	25	0	0	2	1	0	0	80.6	90.3
IA	14	11	1	0	0	0	0	1	78.6	92.9
IL	71	31	1	0	0	7	0	5	43.7	62.0
IN	16	16	0	0	0	0	0	0	100.0	100.0
KS	17	7	0	0	0	0	0	0	41.2	41.2
KY	20	6	1	0	0	0	0	1	30.0	40.0
LA	39	18	0	0	0	2	0	0	46.2	51.3
MA	94	61	0	0	0	1	1	2	64.9	69.1
MD	30	18	0	0	0	1	0	0	60.0	63.3
ME	5	3	0	0	0	0	0	0	60.0	60.0
MI	39	21	1	0	0	1	0	6	53.8	74.4
MN	20	17	0	0	0	0	0	0	85.0	85.0
MO	32	10	0	0	0	2	0	2	31.3	43.8
MS	9	4	0	0	0	0	0	0	44.4	44.4
NC	38	30	0	0	0	0	0	0	78.9	78.9
NE	5	5	0	0	0	0	0	0	100.0	100.0
NH	8	7	1	0	0	0	0	0	87.5	100.0
NJ	21	5	0	0	2	1	0	3	23.8	52.4
NM	8	3	0	0	0	0	0	1	37.5	50.0
NY	155	61	0	0	3	2	0	4	39.4	45.2
OH	59	27	0	0	0	2	0	1	45.8	50.8
OK	8	5	0	0	0	0	0	0	62.5	62.5
OR	10	6	0	0	0	0	0	1	60.0	70.0
PA	103	50	2	0	1	11	0	3	48.5	65.0
SC	19	11	0	0	0	0	0	0	57.9	57.9
TN	20	6	0	0	0	0	0	0	30.0	30.0
TX	118	82	0	0	1	2	0	5	69.5	76.3
UT	10	10	0	0	0	0	0	0	100.0	100.0
VA	24	16	0	0	0	0	0	0	66.7	66.7
VT	5	3	1	0	0	0	0	0	60.0	80.0
WA	16	16	0	0	0	0	0	0	100.0	100.0
WI	28	14	0	0	0	0	0	3	50.0	60.7
WV	8	1	0	0	0	1	0	0	12.5	25.0
1419		831	13	0	11	40	1	47	58.6	66.5

**DERMATOLOGY - 1993**  
Positions Offered and Filled in NRMP

ST	POSITIONS	USG	USMD	STHPW	USFMG	OSTEO	CANADA	ALFMG	%USG	%TOT
AR	3	3	0	0	0	0	0	0	100.0	100.0
MN	1	1	0	0	0	0	0	0	100.0	100.0
OH	7	7	0	0	0	0	0	0	100.0	100.0
OK	2	1	1	0	0	0	0	0	50.0	100.0
TN	2	2	0	0	0	0	0	0	100.0	100.0
TX	2	2	0	0	0	0	0	0	100.0	100.0
17		16	1	0	0	0	0	0	94.1	100.0

**EMERGENCY MEDICINE - 1993**  
Positions Offered and Filled in NRMP

ST	POSITIONS	USG	USMD	STHPW	USFMG	OSTEO	CANADA	ALFMG	%USG	%TOT
AR	6	6	0	0	0	0	0	0	100.0	100.0
AZ	16	15	0	0	0	0	1	0	93.8	100.0
CA	113	89	14	0	1	3	1	5	78.8	100.0
CO	12	10	1	0	0	0	0	0	83.3	91.7
CT	9	7	1	0	0	0	0	1	77.8	100.0
DC	16	7	1	0	1	0	0	2	43.8	88.8
DE	12	10	2	0	0	0	0	0	83.3	100.0
FL	20	16	4	0	0	0	0	0	80.0	100.0
GA	21	10	7	0	0	1	0	0	47.6	85.7
IL	56	45	4	0	0	4	0	0	80.4	94.6
IN	14	13	0	0	0	0	0	0	92.9	92.9
KY	13	7	2	0	0	0	0	0	53.8	69.2
LA	23	14	5	0	0	3	0	0	60.9	95.7
MA	26	21	3	0	0	1	1	0	80.8	100.0
MD	19	14	5	0	0	0	0	0	73.7	100.0
MI	85	66	9	0	1	4	0	2	77.6	95.5
MN	9	7	2	0	0	0	0	0	77.8	100.0
MO	9	7	2	0	0	0	0	0	77.8	100.0
MS	5	6	0	0	0	0	0	0	100.0	100.0
NC	28	25	3	0	0	0	0	0	89.3	100.0
NJ	6	5	1	0	0	0	0	0	83.3	100.0
NM	8	7	1	0	0	0	0	0	87.5	100.0
NY	91	54	4	2	3	6	0	9	59.3	85.7
OH	62	54	6	0	0	2	0	0	87.1	100.0
OK	6	4	2	0	0	0	0	0	66.7	100.0
OR	6	4	2	0	0	0	0	0	66.7	100.0
PA	59	53	3	0	0	3	0	0	89.8	100.0
RI	8	4	2	0	1	1	0	0	50.0	100.0
SC	6	6	0	0	0	0	0	0	100.0	100.0
TN	6	4	2	0	0	0	0	0	66.7	100.0
TX	22	15	5	1	0	1	0	0	68.2	100.0
VA	8	8	0	0	0	0	0	0	100.0	100.0
WI	8	6	0	0	0	0	2	0	75.0	100.0
WV	6	5	1	0	0	0	0	0	83.3	100.0
815		624	94	3	7	29	5	19	76.6	95.8

**FAMILY PRACTICE - 1993**  
Positions Offered and Filled in NRMP

ST	POSITIONS	USG	USMD	STHPW	USFMG	OSTEO	CANADA	ALFMG	%USG	%TOT
AL	47	34	1	0	0	0	0	0	72.3	76.6
AR	39	32	0	0	0	0	0	0	82.1	82.1
AZ	34	32	0	0	1	0	0	1	94.1	100.0
CA	248	176	10	1	3	16	2	12	71.0	88.7
CO	51	44	1	0	0	1	1	0	86.3	92.2
CT	17	12	0	0	1	0	0	0	70.6	76.5
DC	14	9	0	0	0	0	0	5	64.3	100.0
DE	11	9	0	0	0	1	0	0	81.8	90.9
FL	68	46	2	0	2	4	0	10	67.6	94.1
GA	52	38	0	0	0	3	0	2	73.1	82.7
IA	55	35	0	0	1	10	0	1	63.6	85.5
ID	12	10	0	0	0	1	0	0	83.3	91.7
IL	145	57	3	1	10	9	0	26	39.3	73.1
IN	84	52	0	0	3	2	0	9	61.9	78.6
KS	36	22	0	0	0	3	0	0	61.1	69.4
KY	34	19	2	0	3	0	0	1	55.9	73.5
LA	37	18	0	0	0	2	0	0	48.6	54.1
MA	20	10	1	0	0	2	0	1	50.0	70.0
MD	25	14	0	0	2	0	0	2	56.0	72.0
ME	22	15	2	0	0	0	0	0	68.2	77.3
MI	115	50	0	0	0	2	0	17	43.5	60.0
MN	91	68	3	0	1	1	0	9	74.7	90.1
MO	54	33	2	0	0	4	0	0	61.1	72.2
MS	14	12	0	0	0	2	0	0	85.7	100.0
NC	63	48	1	0	0	1	0	0	76.2	79.4
ND	20	16	0	0	0	0	0	1	80.0	85.0
NE	31	16	0	0	0	0	0	3	51.6	61.3
NJ	60	36	1	0	3	3	0	5	60.0	80.0
NM	11	11	0	0	0	0	0	0	100.0	100.0
NV	8	7	0	0	0	1	0	0	87.5	100.0
NY	127	37	1	0	2	3	0	25	29.1	53.5
OH	137	83	0	0	4	3	2	9	60.6	73.7
OK	48	24	0	0	0	1	0	0	50.0	52.1
OR	10	10	0	0	0	0	0	0	100.0	100.0
PA	185	100	1	0	2	4	0	13	60.2	72.3
RI	12	12	0	0	0	0	0	0	100.0	100.0
SC	65	44	0	0	0	0	0	4	67.7	73.8
SD	9	4	0	0	0	0	0	0	44.4	44.4
TN	42	28	0	0	1	0	0	0	66.7	69.0
TX	176	101	1	0	10	13	0	12	57.4	77.8
UT	15	15	0	0	0	0	0	0	100.0	100.0
VA	69	52	0	0	1	0	0	4	75.4	82.6
VT	4	4	0	0	0	0	0	0	100.0	100.0
WA	62	62	0	0	0	0	0	0	100.0	100.0
WI	84	52	0	0	1	3	0	4	61.9	71.4
WV	30	15	0	0	0	0	0	2	50.0	56.7
WY	15	12	0	0	0	2	0	0	80.0	93.3
2589		1636	32	2	51	98	5	178	63.2	77.3

Note: Positions include both PGY-1 and PGY-2.

TABLE 14

### INTERNAL MEDICINE - 1993 Positions Offered and Filled in NRMP

ST	POSITIONS	USG	USMD	STHPW	USFMG	OSTEO	CANADA	ALFMG	%USG	%TOT
AL	83	60	1	0	0	2	0	1	72.3	77.1
AR	23	19	0	0	0	0	0	2	82.6	91.3
AZ	81	34	0	0	5	3	1	17	42.0	74.1
CA	739	544	11	1	12	10	1	62	73.6	86.7
CD	72	58	1	0	1	3	0	5	80.6	94.4
CT	213	95	3	2	11	4	0	78	44.6	90.6
DC	140	60	0	0	4	0	0	24	42.9	62.9
DE	14	12	0	0	0	0	1	0	85.7	92.9
FL	138	107	2	0	0	4	1	14	77.5	92.8
GA	104	76	0	0	0	0	0	12	73.1	85.6
HI	17	7	0	0	1	0	0	1	41.2	52.9
IA	53	35	0	0	1	0	0	3	66.0	88.7
ID	5	1	0	0	1	0	0	0	20.0	40.0
IL	478	199	2	0	7	13	1	165	41.8	81.3
IN	78	54	1	0	0	1	0	10	69.2	84.6
KS	48	23	0	0	0	0	0	1	47.9	50.0
KY	64	32	2	0	0	2	0	13	50.0	76.6
LA	149	79	0	0	0	6	0	0	53.0	57.0
MA	405	327	9	0	2	10	4	40	80.7	96.8
MD	190	114	0	0	3	1	1	35	60.0	81.1
ME	12	10	0	0	0	1	0	1	83.3	100.0
MI	250	107	1	0	6	2	1	90	42.8	82.8
MN	117	94	0	0	1	1	5	9	80.3	94.0
MO	170	78	1	0	2	6	0	47	45.9	78.8
MS	22	22	0	0	0	0	0	0	100.0	100.0
NC	149	118	1	0	0	1	0	12	79.2	88.6
ND	8	0	0	0	0	0	0	8	0.0	100.0
NE	44	34	0	0	0	0	0	0	77.3	77.3
NH	23	23	0	0	0	0	0	0	100.0	100.0
NJ	242	49	2	0	32	6	0	85	20.2	71.9
NM	24	21	0	0	1	0	1	1	87.5	100.0
NV	32	11	0	0	4	2	0	6	34.4	71.9
NY	1282	513	7	5	45	14	2	440	40.0	80.0
OH	355	190	4	0	4	9	1	57	53.5	74.6
OK	50	31	0	0	0	0	0	1	62.0	80.0
OR	75	68	1	0	1	4	0	1	90.7	100.0
PA	504	268	2	0	14	18	0	117	53.2	83.1
PR	18	4	0	0	0	0	0	0	22.2	22.2
RI	63	28	1	0	1	4	0	9	44.4	68.3
SC	44	31	1	0	0	0	0	5	70.5	84.1
SD	6	1	0	0	1	0	0	3	16.7	83.3
TN	144	92	3	0	2	0	1	17	63.9	79.9
TX	300	225	2	0	0	3	2	47	75.0	93.0
UT	41	35	1	0	0	0	1	4	85.4	100.0
VA	118	70	1	0	1	1	0	25	59.3	83.1
VT	20	18	2	0	0	0	0	0	90.0	100.0
WA	72	68	2	0	0	1	1	0	94.4	100.0
WI	77	55	0	0	4	1	0	14	71.4	96.1
WV	55	28	0	0	0	2	0	14	50.9	80.0
	7408	4228	64	8	167	145	26	1502	57.1	82.9

### NEUROLOGICAL SURGERY - 1993 Positions Offered and Filled in NRMP

ST	POSITIONS	USG	USMD	STHPW	USFMG	OSTEO	CANADA	ALFMG	%USG	%TOT
CA	7	6	0	0	0	0	0	0	85.7	85.7
GA	4	2	0	0	0	0	0	0	50.0	50.0
IA	2	2	0	0	0	0	0	0	100.0	100.0
IL	1	1	0	0	0	0	0	0	100.0	100.0
KY	2	1	0	0	0	0	0	0	50.0	50.0
MI	2	2	0	0	0	0	0	0	100.0	100.0
MN	2	2	0	0	0	0	0	0	100.0	100.0
MS	1	0	0	0	0	0	0	0	0.0	0.0
NC	1	0	1	0	0	0	0	0	0.0	100.0
OH	2	1	0	0	0	0	0	0	50.0	50.0
OR	2	2	0	0	0	0	0	0	100.0	100.0
TX	3	2	0	0	0	0	0	0	66.7	66.7
UT	2	1	0	0	0	0	0	0	50.0	50.0
WA	2	2	0	0	0	0	0	0	100.0	100.0
WI	1	1	0	0	0	0	0	0	100.0	100.0
	36	27	1	0	0	0	0	0	75.0	77.8

### NUCLEAR MEDICINE - 1993 Positions Offered and Filled in NRMP

ST	POSITIONS	USG	USMD	STHPW	USFMG	OSTEO	CANADA	ALFMG	%USG	%TOT
FL	2	2	0	0	0	0	0	0	100.0	100.0
NY	3	1	1	0	0	0	0	0	33.3	66.7
WI	2	0	0	0	0	0	0	0	0.0	0.0
	7	3	1	0	0	0	0	0	42.9	57.1

### OBSTETRICS-GYNECOLOGY - 1993 Positions Offered and Filled in NRMP

ST	POSITIONS	USG	USMD	STHPW	USFMG	OSTEO	CANADA	ALFMG	%USG	%TOT
AL	10	8	2	0	0	0	0	0	80.0	100.0
AR	4	3	1	0	0	0	0	0	75.0	100.0
AZ	15	14	1	0	0	0	0	0	93.3	100.0
CA	100	89	6	0	0	1	1	2	89.0	99.0
CO	16	14	0	0	0	0	0	0	87.5	87.5
CT	27	19	4	0	0	1	0	2	70.4	96.3
DC	27	24	1	0	0	0	0	2	88.9	100.0
DE	4	3	0	0	0	1	0	0	75.0	100.0
FL	34	27	4	0	0	1	0	2	79.4	100.0
GA	25	21	2	0	0	2	0	0	84.0	100.0
HI	5	5	0	0	0	0	0	0	100.0	100.0
IL	6	6	0	0	0	0	0	0	100.0	100.0
IA	67	54	5	0	1	2	0	5	80.6	100.0
IN	14	12	1	0	0	0	0	1	85.7	100.0
KS	7	7	0	0	0	0	0	0	100.0	100.0
KY	11	11	0	0	0	0	0	0	100.0	100.0
LA	30	30	0	0	0	0	0	0	100.0	100.0
MA	34	32	1	0	0	0	0	1	94.1	100.0
MD	29	20	3	0	0	0	0	3	69.0	89.7
ME	3	2	1	0	0	0	0	0	66.7	100.0
MI	60	54	2	0	0	1	0	1	90.0	100.0
MN	13	11	1	0	0	0	0	1	84.6	100.0
MO	28	25	2	0	0	0	0	1	89.3	100.0
MS	8	5	0	0	0	0	0	0	100.0	100.0
NC	33	31	0	0	0	0	0	1	93.9	97.0
NE	6	6	0	0	0	0	0	0	100.0	100.0
NJ	27	23	1	0	0	3	0	0	85.2	100.0
NM	6	6	0	0	0	0	0	0	100.0	100.0
NV	2	2	0	0	0	0	0	0	100.0	100.0
NY	163	124	12	0	3	3	0	12	76.1	94.5
OH	60	49	1	0	0	5	0	4	81.7	98.3
OK	8	7	1	0	0	1	0	0	87.5	100.0
OR	6	6	0	0	0	0	0	0	100.0	100.0
PA	73	64	5	0	0	3	0	1	87.7	100.0
RI	7	7	0	0	0	0	0	0	100.0	100.0
SC	12	12	0	0	0	0	0	0	100.0	100.0
TN	23	20	1	0	0	1	0	1	87.0	100.0
TX	83	79	3	0	0	1	0	0	95.2	100.0
UT	4	4	0	0	0	0	0	0	100.0	100.0
VA	23	19	2	0	0	0	1	0	82.6	95.7
VT	3	3	0	0	0	0	0	0	100.0	100.0
WA	5	5	0	0	0	0	0	0	100.0	100.0
WI	14	14	0	0	0	0	0	0	100.0	100.0
WV	5	4	0	0	0	1	0	0	80.0	100.0
	1139	982	63	0	4	27	2	42	86.2	98.3

### NEUROLOGY - 1993 Positions Offered and Filled in NRMP

ST	POSITIONS	USG	USMD	STHPW	USFMG	OSTEO	CANADA	ALFMG	%USG	%TOT
IA	1	1	0	0	0	0	0	0	100.0	100.0
IL	5	1	0	0	0	0	0	0	20.0	20.0
KY	3	2	0	0	0	0	0	0	66.7	66.7
MA	0	0	0	0	0	0	0	0	0.0	0.0
MD	0	0	0	0	0	0	0	0	0.0	0.0
MO	4	0	0	0	0	0	0	3	0.0	75.0
MS	3	2	0	0	0	0	0	0	66.7	66.7
NC	3	3	0	0	0	0	0	0	100.0	100.0
NJ	3	2	0	0	0	0	0	0	66.7	66.7
OH	2	1	0	0	0	0	0	0	50.0	50.0
PA	2	2	0	0	0	0	0	0	100.0	100.0
TN	3	0	0	0	0	0	0	1	0.0	33.3
WA	4	4	0	0	0	0	0	0	100.0	100.0
WI	6	1	0	0	0	0	0	1	16.7	33.3
	39	19	0	0	0	0	0	5	48.7	61.5

Note: Positions include both PGY-1 and PGY-2.

TABLE 14

**OPHTHALMOLOGY - 1993**  
Positions Offered and Filled in NRMP

ST	POSITIONS	USG	USMD	STHPW	USFMG	OSTEO	CANADA	ALFMG	%USG	%TOT
MN	1	1	0	0	0	0	0	0	100.0	100.0
MS	2	2	0	0	0	0	0	0	100.0	100.0
TX	2	2	0	0	0	0	0	0	100.0	100.0
	5	5	0	0	0	0	0	0	100.0	100.0

**OTOLARYNGOLOGY - 1993**  
Positions Offered and Filled in NRMP

ST	POSITIONS	USG	USMD	STHPW	USFMG	OSTEO	CANADA	ALFMG	%USG	%TOT
CA	15	14	1	0	0	0	0	0	93.3	100.0
FL	2	1	1	0	0	0	0	0	50.0	100.0
GA	4	3	0	0	0	0	0	0	75.0	75.0
IL	3	2	0	0	0	0	0	0	66.7	66.7
MA	2	2	0	0	0	0	0	0	100.0	100.0
MN	4	4	0	0	0	0	0	0	100.0	100.0
MS	2	2	0	0	0	0	0	0	100.0	100.0
NC	5	5	0	0	0	0	0	0	100.0	100.0
OH	3	3	0	0	0	0	0	0	100.0	100.0
OK	2	2	0	0	0	0	0	0	100.0	100.0
OR	2	1	0	0	0	0	0	0	50.0	50.0
PA	2	2	0	0	0	0	0	0	100.0	100.0
UT	1	0	0	0	0	0	0	0	0.0	0.0
WI	4	4	0	0	0	0	0	0	100.0	100.0
	51	45	2	0	0	0	0	0	88.2	92.2

**ORTHOPEDIC SURGERY - 1993**  
Positions Offered and Filled in NRMP

ST	POSITIONS	USG	USMD	STHPW	USFMG	OSTEO	CANADA	ALFMG	%USG	%TOT
AL	6	5	1	0	0	0	0	0	83.3	100.0
AR	4	4	0	0	0	0	0	0	100.0	100.0
AZ	5	3	2	0	0	0	0	0	60.0	100.0
CA	47	42	5	0	0	0	0	0	89.4	100.0
CO	4	3	1	0	0	0	0	0	75.0	100.0
CT	9	9	0	0	0	0	0	0	100.0	100.0
DC	9	8	1	0	0	0	0	0	88.9	100.0
FL	16	13	2	0	0	1	0	0	81.3	100.0
GA	11	10	0	0	0	0	0	1	90.9	100.0
HI	1	1	0	0	0	0	0	0	100.0	100.0
IA	5	5	0	0	0	0	0	0	100.0	100.0
IL	30	25	4	0	0	0	0	1	83.3	100.0
IN	5	5	0	0	0	0	0	0	100.0	100.0
KS	7	7	0	0	0	0	0	0	100.0	100.0
KY	6	3	2	0	1	0	0	0	50.0	83.3
LA	15	10	2	0	0	0	0	0	66.7	86.7
MA	20	18	2	0	0	0	0	0	90.0	100.0
MD	11	10	1	0	0	0	0	0	90.9	100.0
MI	30	26	3	0	0	0	0	1	86.7	100.0
MN	18	17	0	0	0	0	1	0	94.4	100.0
MO	10	9	1	0	0	0	0	0	90.0	100.0
MS	3	3	0	0	0	0	0	0	100.0	100.0
NC	19	18	1	0	0	0	0	0	94.7	100.0
NE	4	3	1	0	0	0	0	0	75.0	100.0
NJ	13	11	2	0	0	0	0	0	84.6	100.0
NM	4	4	0	0	0	0	0	0	100.0	100.0
NY	85	74	9	0	0	0	0	1	87.1	98.8
OH	35	27	6	0	0	1	0	1	77.1	100.0
OK	4	4	0	0	0	0	0	0	100.0	100.0
OR	2	2	0	0	0	0	0	0	100.0	100.0
PA	40	36	4	0	0	0	0	0	90.0	100.0
RI	4	4	0	0	0	0	0	0	100.0	100.0
SC	8	8	0	0	0	0	0	0	100.0	100.0
TN	6	5	1	0	0	0	0	0	83.3	100.0
TX	26	25	0	0	0	1	0	0	96.2	100.0
UT	2	2	0	0	0	0	0	0	100.0	100.0
VA	8	8	0	0	0	0	0	0	100.0	100.0
VT	3	3	0	0	0	0	0	0	100.0	100.0
WA	5	3	1	0	0	0	0	1	60.0	100.0
WI	9	9	0	0	0	0	0	0	100.0	100.0
WV	3	2	1	0	0	0	0	0	66.7	100.0
	552	484	53	0	1	3	1	6	87.7	99.3

**PATHOLOGY - 1993**  
Positions Offered and Filled in NRMP

ST	POSITIONS	USG	USMD	STHPW	USFMG	OSTEO	CANADA	ALFMG	%USG	%TOT
AL	9	4	0	0	0	1	0	1	44.4	66.7
AR	4	2	0	0	0	0	0	0	50.0	50.0
AZ	6	5	0	0	0	0	0	0	83.3	83.3
CA	52	35	1	0	0	0	0	3	67.3	75.0
CO	7	4	0	0	0	0	0	1	57.1	71.4
CT	7	4	0	0	0	0	0	0	57.1	57.1
DC	8	4	0	0	0	0	0	0	66.7	66.7
FL	13	5	1	0	0	0	0	3	38.5	68.2
GA	10	8	0	0	0	0	0	0	80.0	80.0
HI	5	4	1	0	0	0	0	0	80.0	100.0
IA	5	5	0	0	0	0	0	0	100.0	100.0
IL	25	3	2	0	0	0	0	4	12.0	36.0
IN	7	6	1	0	0	0	0	0	85.7	100.0
KS	4	1	0	0	0	0	0	1	25.0	50.0
KY	7	3	0	0	0	0	0	0	42.9	42.9
LA	8	4	0	0	0	0	0	0	50.0	50.0
MA	31	25	0	0	0	0	0	2	80.6	87.1
MD	9	7	0	0	0	1	0	1	77.8	88.9
ME	17	4	3	0	1	1	0	4	23.5	76.5
MN	15	12	0	0	0	0	0	2	80.0	93.3
MO	19	8	0	0	0	0	0	0	42.1	42.1
MS	4	3	0	0	0	0	0	0	75.0	75.0
NC	17	11	1	0	0	0	0	0	64.7	70.6
NE	4	3	0	0	0	0	0	0	75.0	75.0
NH	3	2	0	0	0	0	0	0	66.7	66.7
NJ	6	4	0	0	0	0	0	0	66.7	66.7
NM	4	3	0	0	0	0	0	1	75.0	100.0
NY	60	19	1	0	0	0	0	10	31.7	50.0
OH	26	11	0	0	0	0	0	6	42.3	65.4
OK	5	4	0	0	0	0	0	0	80.0	80.0
OR	3	3	0	0	0	0	0	0	100.0	100.0
PA	30	18	0	0	0	0	0	4	60.0	73.3
RI	2	1	0	0	0	0	0	1	50.0	100.0
SC	4	3	0	0	0	0	0	0	75.0	75.0
TN	15	3	1	0	1	0	0	1	20.0	40.0
TX	36	19	0	0	0	1	0	7	52.8	75.0
UT	3	3	0	0	0	0	0	0	100.0	100.0
VA	5	4	0	0	1	0	0	0	44.4	55.6
VT	6	5	0	0	0	0	0	0	80.0	80.0
WA	6	5	0	0	0	0	0	1	83.3	100.0
WI	6	2	0	0	0	0	0	0	33.3	33.3
WV	3	0	0	0	0	0	0	0	0.0	0.0
	517	278	12	0	3	3	0	53	53.8	67.5

Note: Positions include both PGY-1 and PGY-2.



TABLE 14

**PEDIATRICS - 1993**  
Positions Offered and Filled in NRMP

ST	POSITIONS	USG	USMD	STHPW	USFNG	OSTEO	CANADA	ALFNG	%USG	%TOT
AL	21	19	0	0	0	0	0	0	90.5	90.5
AR	18	17	0	0	0	0	1	0	94.4	100.0
AZ	30	26	0	0	0	2	0	1	86.7	96.7
CA	252	171	6	0	4	4	3	23	67.9	83.7
CO	27	25	0	0	0	0	0	0	92.6	92.6
CT	36	20	1	0	2	0	0	13	55.6	100.0
DC	54	36	1	0	1	0	0	5	66.7	79.6
FL	92	45	1	0	13	1	0	32	48.9	100.0
GA	28	26	0	0	0	2	0	0	92.9	100.0
HI	8	4	0	0	0	0	0	0	50.0	50.0
IA	17	12	0	0	0	0	0	2	70.6	82.4
IL	97	50	2	0	2	0	0	33	51.5	89.7
IN	23	20	0	0	0	0	0	1	87.0	91.3
KS	10	2	0	0	0	0	0	1	20.0	30.0
KY	22	22	0	0	0	0	0	0	100.0	100.0
LA	39	24	0	0	0	0	0	0	61.5	61.5
MA	70	62	0	0	1	0	1	3	88.6	95.7
MD	41	36	0	0	1	0	1	3	87.8	100.0
ME	5	4	0	0	0	1	0	0	80.0	100.0
MI	51	19	0	0	0	1	0	12	37.3	82.7
MN	29	23	1	0	1	0	0	3	79.3	96.6
MO	57	53	0	0	0	0	0	4	93.0	100.0
MS	8	2	0	0	0	0	0	6	25.0	100.0
NC	52	40	0	0	0	1	0	6	76.9	90.4
NE	13	10	0	0	0	0	0	0	76.9	76.9
NH	5	1	0	0	0	0	0	0	20.0	20.0
NJ	44	6	0	0	4	2	0	18	13.6	68.2
NM	8	5	1	0	0	2	0	0	62.5	100.0
NY	287	141	2	0	11	5	0	86	49.1	85.4
OH	118	87	2	0	0	2	0	11	73.7	86.4
OK	19	5	0	0	1	0	0	2	26.3	42.1
OR	9	8	0	0	0	1	0	0	88.9	100.0
PA	121	91	1	0	0	5	0	13	75.2	90.9
RI	11	11	0	0	0	0	0	0	100.0	100.0
SC	22	20	0	0	0	0	0	0	90.9	90.9
TN	39	38	0	0	0	0	0	0	97.4	97.4
TX	134	85	0	0	2	3	0	20	63.4	82.1
UT	13	12	0	0	0	0	0	1	92.3	100.0
VA	39	30	1	0	0	0	1	1	75.9	82.1
VT	3	3	0	0	0	0	0	1	50.0	83.3
WA	21	20	1	0	0	0	1	0	95.2	100.0
WI	34	21	1	0	1	2	0	6	61.8	91.2
WV	13	6	0	0	0	0	0	3	46.2	69.2
	2043	1358	21	0	44	34	7	310	66.5	86.8

**PLASTIC SURGERY - 1993**  
Positions Offered and Filled in NRMP

ST	POSITIONS	USG	USMD	STHPW	USFNG	OSTEO	CANADA	ALFNG	%USG	%TOT
CA	5	5	0	0	0	0	0	0	100.0	100.0
IL	3	3	0	0	0	0	0	0	100.0	100.0
KY	1	1	0	0	0	0	0	0	100.0	100.0
MD	2	2	0	0	0	0	0	0	100.0	100.0
MI	4	3	0	0	0	0	0	0	75.0	75.0
MO	1	1	0	0	0	0	0	0	100.0	100.0
MS	1	1	0	0	0	0	0	0	100.0	100.0
OH	3	3	0	0	0	0	0	0	100.0	100.0
PA	1	1	0	0	0	0	0	0	100.0	100.0
RI	1	1	0	0	0	0	0	0	100.0	100.0
TX	2	1	0	0	0	0	0	0	50.0	50.0
WI	1	0	0	0	0	0	0	0	0.0	0.0
	25	22	0	0	0	0	0	0	88.0	88.0

**PREV MED/PUBLIC HEALTH - 1993**  
Positions Offered and Filled in NRMP

ST	POSITIONS	USG	USMD	STHPW	USFNG	OSTEO	CANADA	ALFNG	%USG	%TOT
CO	1	0	0	0	0	0	0	0	0.0	0.0
GA	2	0	0	0	0	0	0	0	0.0	0.0
IL	1	0	0	0	0	0	0	1	0.0	100.0
MD	1	0	0	0	0	0	0	0	0.0	0.0
MO	1	0	0	0	0	0	0	0	0.0	0.0
NY	4	0	0	0	0	0	0	0	0.0	0.0
TN	4	1	0	0	0	0	0	1	25.0	50.0
	14	1	0	0	0	0	0	2	7.1	21.4

**PHYS MEDICINE & REHAB - 1993**  
Positions Offered and Filled in NRMP

ST	POSITIONS	USG	USMD	STHPW	USFNG	OSTEO	CANADA	ALFNG	%USG	%TOT
AL	2	0	0	0	0	1	0	0	0.0	50.0
AR	8	8	0	0	0	0	0	0	100.0	100.0
CA	13	12	0	0	0	0	0	0	92.3	92.3
CO	3	2	0	0	0	0	0	0	66.7	66.7
DC	3	2	0	0	0	0	0	0	66.7	66.7
GA	4	2	2	0	0	0	0	0	50.0	100.0
IL	29	20	1	0	0	2	0	1	69.0	82.8
KS	2	1	0	0	0	1	0	0	50.0	100.0
KY	6	2	0	0	0	0	0	1	33.3	50.0
LA	6	5	0	0	0	1	0	0	83.3	100.0
MA	14	8	1	0	0	0	0	1	57.1	71.4
MD	5	4	0	0	0	1	0	0	80.0	100.0
MI	17	9	0	0	1	4	0	0	52.9	82.4
MN	12	11	0	0	0	1	0	0	91.7	100.0
MO	3	3	0	0	0	0	0	0	100.0	100.0
NC	7	3	0	0	0	0	0	0	42.9	42.9
NJ	12	6	0	0	0	5	0	1	50.0	100.0
NY	47	20	1	0	3	4	0	6	42.6	72.3
OH	16	12	0	0	0	2	0	0	75.0	87.5
PA	30	14	0	0	0	5	0	2	46.7	70.0
PR	1	0	0	0	0	0	0	0	0.0	0.0
TX	25	22	2	0	0	0	0	0	88.0	96.0
VA	8	6	0	0	0	0	0	0	75.0	75.0
WA	9	7	0	0	0	0	0	0	100.0	100.0
WI	9	7	0	0	0	0	0	0	77.8	77.8
	291	188	7	0	4	27	0	12	64.6	81.8

**PSYCHIATRY - 1993**  
Positions Offered and Filled in NRMP

ST	POSITIONS	USG	USMD	STHPW	USFNG	OSTEO	CANADA	ALFNG	%USG	%TOT
AL	10	1	0	0	0	0	0	0	10.0	10.0
AR	8	8	0	0	0	0	0	0	75.0	75.0
AZ	14	7	0	0	3	1	0	0	50.0	78.6
CA	118	62	3	0	3	1	1	11	52.5	68.6
CO	13	7	0	0	0	0	0	0	53.8	53.8
CT	23	13	1	0	1	0	1	2	56.5	78.3
DC	20	8	0	0	5	0	0	0	40.0	65.0
DE	3	0	0	0	0	0	0	0	0.0	0.0
FL	17	7	0	0	3	1	0	2	41.2	76.5
GA	24	14	1	0	2	0	0	0	58.3	70.8
HI	7	5	0	0	0	0	1	0	71.4	85.7
IA	7	2	0	0	0	2	0	1	28.6	71.4
IL	54	21	1	0	2	2	0	5	38.9	57.4
IN	10	4	0	0	0	0	0	0	40.0	40.0
KS	15	5	0	0	1	0	0	1	33.3	46.7
KY	12	8	0	0	0	0	0	1	66.7	75.0
LA	20	15	0	0	0	0	0	0	75.0	75.0
MA	72	43	0	0	0	1	1	2	59.7	65.3
MD	25	15	0	0	0	1	0	0	60.0	64.0
ME	3	1	0	0	0	0	0	0	33.3	33.3
MI	32	11	0	0	0	1	0	4	34.4	50.0
MN	12	9	0	0	0	2	0	0	75.0	91.7
MO	30	8	0	0	3	0	0	12	26.7	76.7
MS	4	0	0	0	0	0	0	0	0.0	0.0
NC	39	28	0	0	0	1	1	3	71.8	84.6
ND	3	0	0	0	0	0	0	0	0.0	0.0
NE	12	4	0	0	0	0	0	0	33.3	33.3
NH	5	5	0	0	0	0	0	0	100.0	100.0
NJ	17	0	0	0	2	0	0	3	0.0	29.4
NM	10	5	1	0	0	0	0	0	50.0	60.0
NV	4	1	0	0	0	0	0	0	25.0	25.0
NY	165	59	3	0	7	5	0	33	35.8	64.8
OH	49	17	0	0	3	2	1	7	34.7	61.2
OK	10	4	0	0	0	0	0	0	40.0	60.0
OR	8	5	0	0	0	0	1	0	62.5	75.0
PA	69	35	2	0	0	2	0	8	50.7	68.1
RI	11	2	0	0	0	0	1	1	18.2	36.4
SC	24	13	1	0	0	0	0	1	54.2	62.5
SD	3	0	0	0	0	0	0	0	0.0	0.0
TN	22	7	1	0	0	0	0	0	31.8	36.4
TX	79	32	0	1	5	4	0	9	40.5	64.6
UT	6	6	0	0	0	0	0	0	100.0	100.0
VA	23	7	0	0	0	0	0	6	30.4	56.5
VT	5	5	0	0	0	0	0	0	100.0	100.0
WA	13	7	2	0	1	1	0	0	53.8	84.6
WI	22	13	0	0	0	0	0	0	59.1	59.1
WV	8	1	0	0	0	0	0	0	12.5	12.5
	1160	528	16	1	41	27	8	114	45.5	63.4

Note: Positions include both PGY-1 and PGY-2.

TABLE 14

## RADIOLOGY - DIAGNOSTIC - 1993

ST	POSITIONS	USG	USMD	STHPW	USFMG	OSTEO	CANADA	ALFMG	XUSG	%TOT
AL	12	8	1	0	0	0	0	0	66.7	75.0
AR	5	4	1	0	0	0	0	0	80.0	100.0
AZ	7	5	2	0	0	0	0	0	71.4	100.0
CA	81	69	11	0	0	1	0	0	85.2	100.0
CD	10	7	2	0	0	0	0	0	70.0	90.0
CT	19	17	1	0	0	0	0	0	89.5	94.7
DC	9	5	2	0	0	0	1	0	55.6	100.0
DE	4	3	0	0	0	0	0	0	100.0	100.0
FL	29	24	4	0	0	0	0	1	82.8	100.0
GA	12	11	1	0	0	0	0	0	91.7	100.0
IA	5	5	0	0	0	0	0	0	100.0	100.0
IL	46	33	5	0	0	4	1	2	71.7	97.8
IN	18	15	0	0	0	0	0	0	83.3	83.3
KS	7	6	0	0	0	0	0	0	85.7	85.7
KY	9	7	1	0	0	0	0	1	77.8	100.0
LA	5	5	0	0	0	0	0	0	100.0	100.0
MA	46	33	8	0	0	0	0	3	71.7	95.7
MD	14	13	0	0	0	0	0	0	92.9	92.9
ME	3	2	0	0	0	1	0	0	66.7	100.0
MI	51	44	4	0	0	0	0	1	86.3	96.1
MN	18	16	2	0	0	0	0	0	88.9	100.0
MO	34	23	2	0	0	0	1	2	67.6	82.4
MS	4	5	1	0	0	0	0	0	50.0	100.0
NC	26	22	2	0	0	0	0	1	84.6	95.2
NE	4	2	1	0	0	1	0	0	80.0	100.0
NH	1	0	1	0	0	0	0	0	0.0	100.0
NJ	23	16	3	0	1	1	0	0	69.6	91.3
NM	7	7	0	0	0	0	0	0	100.0	100.0
NY	121	94	11	0	1	0	1	4	77.7	91.7
OH	38	24	7	0	0	0	0	3	63.2	89.5
OK	7	7	0	0	0	0	0	0	100.0	100.0
OR	4	4	0	0	0	0	0	0	100.0	100.0
PA	75	58	10	0	0	1	0	0	77.3	92.0
RI	5	5	0	0	0	0	0	0	100.0	100.0
SC	7	5	1	0	0	0	0	0	71.4	85.7
TN	13	12	0	0	0	0	0	0	92.3	92.3
TX	44	37	6	0	0	0	1	0	84.1	100.0
UT	4	2	2	0	0	0	0	0	50.0	100.0
VA	13	12	0	0	0	0	0	0	92.3	92.3
VT	3	3	0	0	0	0	0	0	100.0	100.0
WA	13	12	1	0	0	0	0	0	92.3	100.0
WI	16	15	1	0	0	0	0	0	93.8	100.0
WV	2	2	0	0	0	0	0	0	100.0	100.0
	875	698	94	0	2	9	5	19	79.9	94.6

**SURGERY - 1993**  
**Positions Offered and Filled in NRMP**

ST	POSITIONS	USG	USMD	STHPW	USFMG	OSTEO	CANADA	ALFMG	%USG	%TOT
AL	35	24	3	0	0	0	0	0	68.6	77.1
AR	12	4	2	0	0	0	0	0	33.3	50.0
AZ	19	16	1	0	0	0	0	0	84.2	89.5
CA	197	131	9	0	2	1	3	5	66.5	76.6
CO	27	21	0	0	0	0	0	0	77.8	77.8
CT	39	21	2	0	2	0	0	6	53.8	79.5
DC	55	39	0	0	1	0	0	2	70.9	76
DE	7	3	0	0	0	0	0	2	42.9	71.4
FL	45	29	3	0	0	0	0	1	64.4	75.6
GA	32	20	2	0	1	0	0	1	62.5	75.0
HI	9	7	1	0	0	0	0	1	77.8	100.0
IA	18	13	2	0	0	0	0	1	72.2	88.9
IL	112	78	4	0	3	2	0	11	67.9	85.7
IN	24	17	1	0	0	0	0	0	70.8	75.0
KS	11	11	0	0	0	0	0	0	100.0	100.0
KY	29	16	1	0	0	0	0	2	55.2	65.5
LA	54	43	2	0	0	0	0	0	79.6	83.3
MA	98	54	0	0	1	1	0	6	55.3	73.5
MD	36	21	2	0	0	0	0	8	58.3	75.0
ME	5	3	1	0	0	0	0	0	50.0	66.7
MI	100	60	8	0	1	0	0	9	60.0	78.0
MN	40	26	1	0	0	1	0	1	65.0	72.5
MO	42	35	1	0	0	0	1	0	83.3	88.0
MS	6	6	0	0	0	0	0	0	100.0	100.0
NC	44	31	2	0	1	1	0	2	70.5	84.1
ND	4	2	0	0	1	0	0	1	50.0	100.0
NE	16	9	1	0	0	0	0	0	56.3	62.5
NH	12	7	1	0	0	0	0	0	58.3	66.7
NJ	46	24	1	0	2	1	0	7	52.2	76.1
NM	3	3	0	0	0	0	0	0	100.0	100.0
NV	2	2	0	0	0	0	0	0	100.0	100.0
NY	353	199	13	0	5	1	1	47	56.4	75.4
OH	94	49	7	0	1	2	0	4	52.1	67.0
OK	16	6	2	0	0	0	0	0	37.5	50.0
OR	22	13	1	0	1	0	0	1	59.1	72.7
PA	172	87	14	0	1	2	0	17	50.6	70.3
RI	13	6	0	0	0	0	0	1	46.2	53.8
SC	31	18	1	0	0	0	0	0	58.1	61.3
TN	63	44	3	0	1	0	0	0	69.8	76.2
TX	126	94	4	0	1	0	0	2	74.6	80.2
UT	11	11	0	0	0	0	0	0	100.0	100.0
VA	50	31	1	0	0	0	1	7	62.0	80.0
VT	8	5	0	0	0	0	0	0	62.5	62.5
WA	22	18	2	0	0	0	0	1	81.8	95.5
WI	22	21	1	0	0	0	0	0	95.5	100.0
WV	20	13	2	0	0	0	0	0	65.0	75.0
TOTAL	2203	1399	102	0	26	12	6	146	63.5	76.6

## RADIOLOGY - ONCOLOGY - 1993

ST	POSITIONS	USG	USMD	STHPW	USFMG	OSTEO	CANADA	ALFMG	%USG	%TOT
AL	1	0		0	0	0	0	0	0.0	100.0
AZ	3	2	1	0	0	0	0	0	66.7	100.0
CA	15	13	0	0	0	0	0	0	86.7	86.7
CT	3	2	1	0	0	0	0	0	66.7	100.0
DC	1	1	0	0	0	0	0	0	100.0	100.0
FL	4	3	0	0	0	0	0	0	75.0	75.0
GA	2	2	0	0	0	0	0	0	100.0	100.0
IL	12	7	1	0	0	0	0	0	58.3	61.1
IN	2	1	0	0	0	0	0	0	50.0	50.0
KS	2	0	0	0	0	0	0	0	0.0	0.0
KY	4	3	1	0	0	0	0	0	75.0	100.0
MA	5	5	0	0	0	0	0	0	100.0	100.0
MD	3	2	0	0	0	0	0	1	66.7	100.0
MI	8	7	1	0	0	0	0	0	87.5	100.0
MN	5	3	0	0	0	0	0	0	60.0	60.0
MO	4	4	0	0	0	0	0	0	100.0	100.0
NC	5	5	0	0	0	0	0	0	100.0	100.0
NJ	2	0	0	0	0	1	0	0	0.0	50.0
NY	17	7	0	0	0	0	0	2	41.2	52.9
OH	7	3	2	0	0	0	0	0	42.9	71.4
OR	1	1	0	0	0	0	0	0	100.0	100.0
PA	9	9	0	0	0	0	0	0	100.0	100.0
TX	10	2	4	0	0	0	0	3	20.0	90.0
UT	3	2	0	0	0	0	0	0	66.7	66.7
VA	4	2	0	0	0	0	0	0	75.0	75.0
WA	2	1	1	0	0	0	0	0	50.0	100.0
WI	4	4	0	0	0	0	0	0	100.0	100.0
	139	92	13	0	0	1	0	6	66.2	80.6

**TRANSITIONAL - 1993**  
**Positions Offered and Filled in NRMP**

ST	POSITIONS	USG	USMD	5THPW	USFMG	OSTED	CANADA	ALFMG	%USG	%TOT
AL	34	23	0	0	0	0	0	0	67.6	67.6
AR	12	10	0	0	0	0	0	0	83.3	83.3
AZ	25	22	1	0	0	1	1	0	88.0	100.0
CA	96	79	3	0	1	3	0	0	82.3	89.6
CO	14	13	1	0	0	0	0	0	92.9	100.0
CT	14	10	0	0	1	0	0	2	71.4	92.9
DC	34	14	1	0	1	0	0	7	41.2	67.6
DE	6	2	0	0	0	0	0	0	50.0	50.0
FL	6	5	1	0	0	0	0	0	83.3	100.0
GA	35	30	0	0	1	0	0	1	85.7	91.4
HI	14	14	0	0	0	0	0	0	100.0	100.0
IA	8	7	0	0	0	0	0	0	87.5	87.5
IL	89	66	2	0	2	0	0	10	74.2	89.9
IN	42	26	1	0	0	0	0	2	61.9	69.0
LA	37	13	0	0	0	0	0	0	35.1	35.1
MA	52	33	0	0	0	0	0	4	63.5	75.0
MD	12	9	0	0	1	0	0	0	75.0	83.3
MI	135	69	1	0	1	2	1	25	51.1	73.3
MN	18	15	0	0	1	0	0	2	83.3	100.0
MO	22	13	0	0	0	0	0	7	59.1	90.9
ND	8	3	0	0	0	0	3	0	37.5	75.0
NJ	37	34	0	0	1	0	0	1	91.9	97.3
NY	80	35	0	0	0	0	1	10	43.8	57.5
OH	76	46	0	0	0	0	1	3	60.5	65.8
OK	8	8	0	0	0	0	0	0	100.0	100.0
OR	7	7	0	0	0	0	0	0	100.0	100.0
PA	156	79	1	0	5	0	0	21	50.6	67.9
PR	6	1	0	0	0	0	0	0	16.7	16.7
RI	4	1	0	0	0	0	0	1	25.0	50.0
SC	14	12	1	0	1	0	0	0	85.7	100.0
SD	12	8	0	0	0	0	0	0	66.7	66.7
TN	42	34	1	0	0	1	0	1	81.0	88.1
TX	73	58	1	0	1	2	0	4	79.5	90.4
UT	10	10	0	0	0	0	0	0	100.0	100.0
VA	17	9	0	0	0	0	0	1	73.9	78.8
WA	23	12	0	0	0	0	0	0	52.2	52.2
WI	41	38	2	0	0	0	0	1	92.7	100.0
WV	5	1	0	0	0	0	0	0	73.5	79.5
	1328	868	17	0	19	9	7	106	65.4	77.3

**UROLOGY - 1993**  
**Positions Offered and Filled in NRMP**

ST	POSITIONS	USG	USMO	STHPW	USFMG	OSTED	CANADA	ALFMG	USUG	%TOT
AZ	1	1	0	0	0	0	0	0	100.0	100.0
CA	14	10	0	0	0	0	0	0	71.4	71.4
FL	2	1	0	0	0	0	0	1	50.0	100.0
GA	5	2	0	0	0	0	0	0	40.0	40.0
IA	3	3	0	0	0	0	0	0	100.0	100.0
IL	3	2	1	0	0	0	0	0	66.7	100.0
KY	2	2	0	0	0	0	0	0	100.0	100.0
LA	2	2	0	0	0	0	0	0	100.0	100.0
MA	1	0	0	0	0	0	0	0	0.0	0.0
MI	5	5	0	0	0	0	0	0	100.0	100.0
MN	4	4	0	0	0	0	0	0	100.0	100.0
MO	1	1	0	0	0	0	0	0	100.0	100.0
MS	1	1	0	0	0	0	0	0	100.0	100.0
NC	6	6	0	0	0	0	0	0	100.0	100.0
NJ	2	1	0	0	0	0	0	0	50.0	50.0
NY	1	1	0	0	0	0	0	0	100.0	100.0
OH	8	4	1	0	0	0	1	0	50.0	75.0
OK	3	0	0	0	0	0	0	1	0.0	33.3
OR	2	2	0	0	0	0	0	0	100.0	100.0
PA	4	4	0	0	0	0	0	0	100.0	100.0
TX	4	4	0	0	0	0	0	0	100.0	100.0
UT	1	0	0	0	0	0	0	0	0.0	0.0
VA	0	0	0	0	0	0	0	0	0.0	0.0
WA	2	1	0	0	0	0	0	0	50.0	50.0
WI	4	4	0	0	0	0	0	0	100.0	100.0
	83	61	2	0	0	0	1	2	73.5	79.5

**Note: Positions include both PGY-1 and PGY-2.**