



## National Resident Matching Program® (NRMP®)

The NRMP, also known as The Match®, is a non-profit organization that for more than 70 years has placed medical students and young physicians into the nation's clinical training programs. The Match ensures that a steady pipeline of highly qualified professionals is building the necessary skills to care for patients across the country through a process that is fair, equitable, efficient, transparent, and reliable.



### 2024 Main Residency Match

**44,853**

**Certified Applicants**  
4.4% increase  
since 2023

**41,503**

**Total Positions**  
2.8% increase  
since 2023



Certified applicants  
matched to PGY-1  
positions



PGY-1 positions  
filled\*

### Overall Placement Rates

PERCENT CHANGE IN PLACED APPLICANTS SINCE 2023

US MD Seniors

**97.9%**

Active Applicant  
Placement Rate

↓ 0.3% US MD Seniors

US DO Seniors

**98.5%**

Active Applicant  
Placement Rate

↓ 0.2% US DO Seniors

US Citizen IMGs

**73.4%**

Active Applicant  
Placement Rate

↓ 0.7% US Citizen IMGs

Non-US Citizen IMGs

**61.5%**

Active Applicant  
Placement Rate

↓ 0.9% Non-US Citizen IMGs

### Program Highlights

INCREASE IN NUMBER FROM 2023

- 1,128 more certified positions
- 125 more certified programs
- 719 more positions in Primary Care

\*Includes preliminary positions



## How We Make A Difference

- NRMP data informs national trends in specialty preferences and reflects physician distribution across the U.S.
- NRMP research drives national conversations about bias in medical education and equity in population health.
- NRMP Matches have served more than 1.4 million applicants for both residency and fellowship training since 1992.



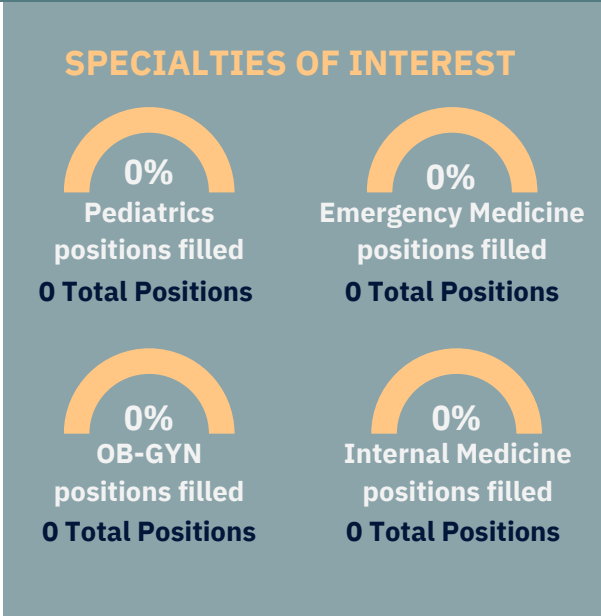
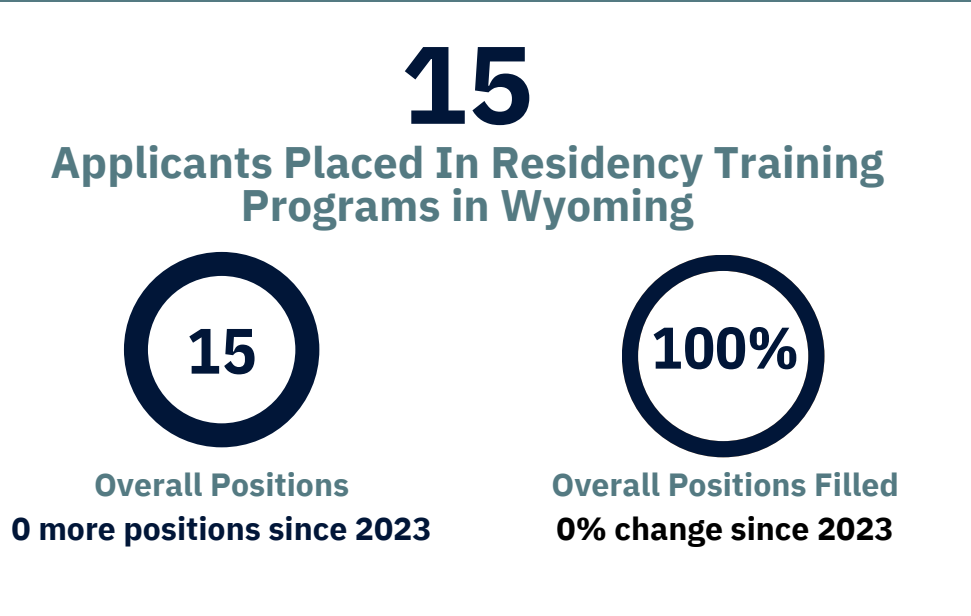
## How We Do It

- Applicants submit to the NRMP lists of programs ranked from most to least preferred of where they would like to train. At the same time, training programs submit lists of applicants who they would most like to train.
- Using a proprietary algorithm, the NRMP places applicants with their most preferred programs that also prefer them.
- Once matched, applicants and programs enter into a binding commitment for training. The binding commitment ensures the continuity and distribution of physicians into community-based and academic centers across the U.S.
- With a Match, applicants and programs are treated equally, and their preferences drive outcomes, thereby reducing bias and inequities in training selection.

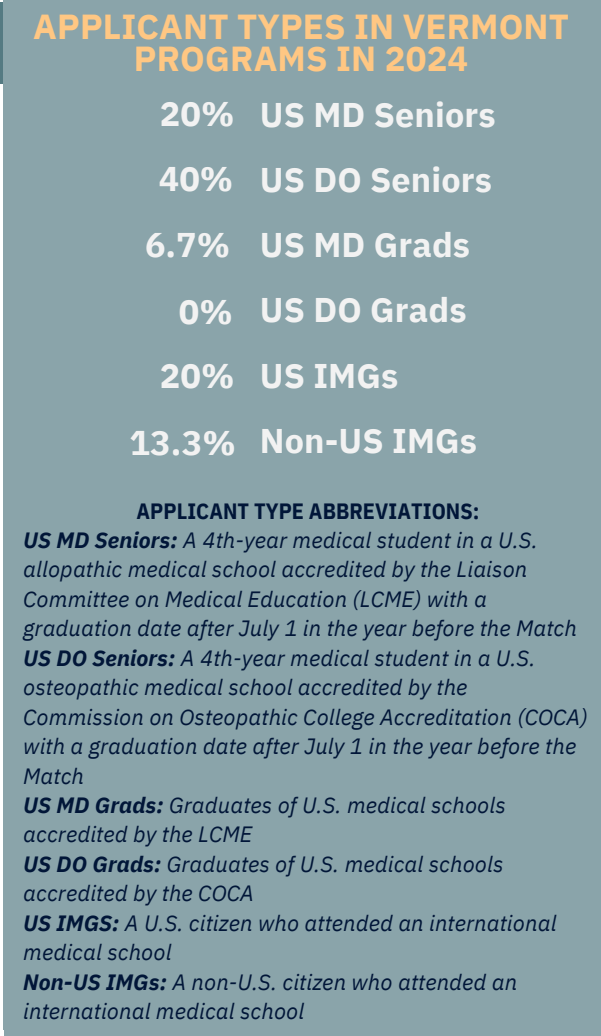
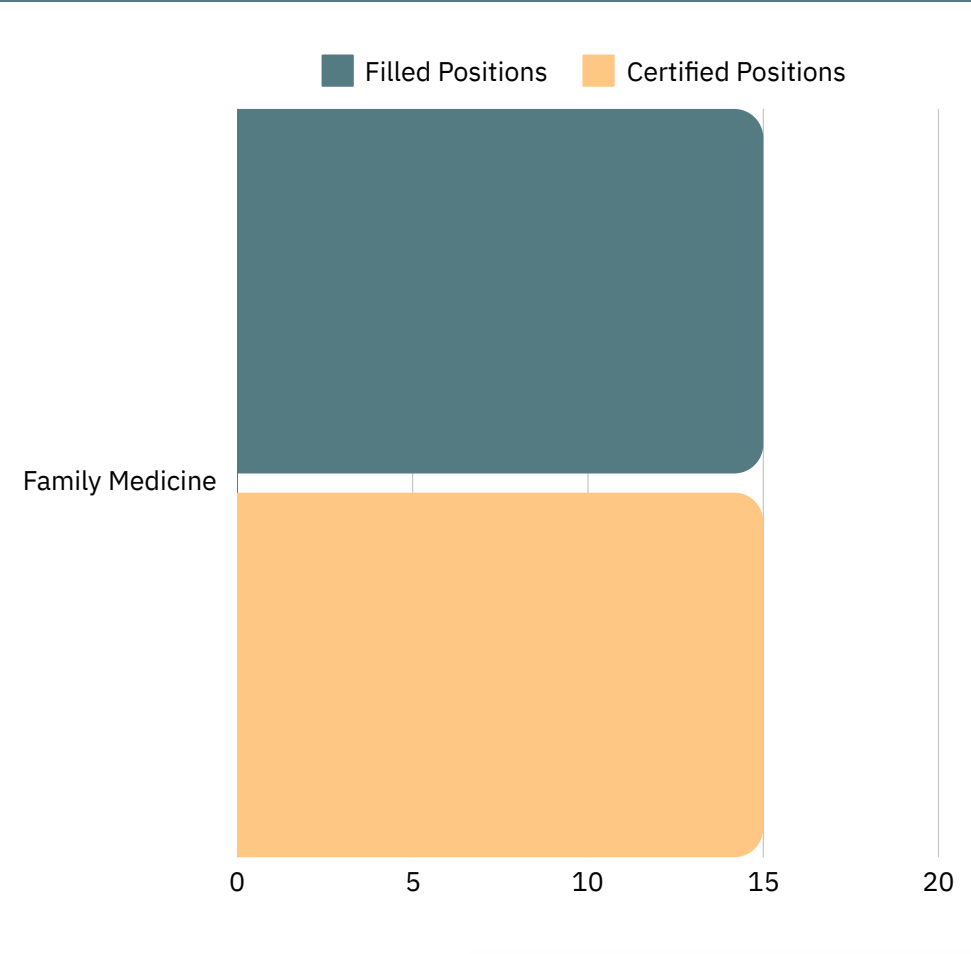
# 2024 Main Residency Match Snapshot

## WYOMING

The 2024 Main Residency Match (MRM) was completed on March 15. New residents begin their core training in their matched hospital by July 1 and remain there, depending on their specialty, for 3 to 7 years.

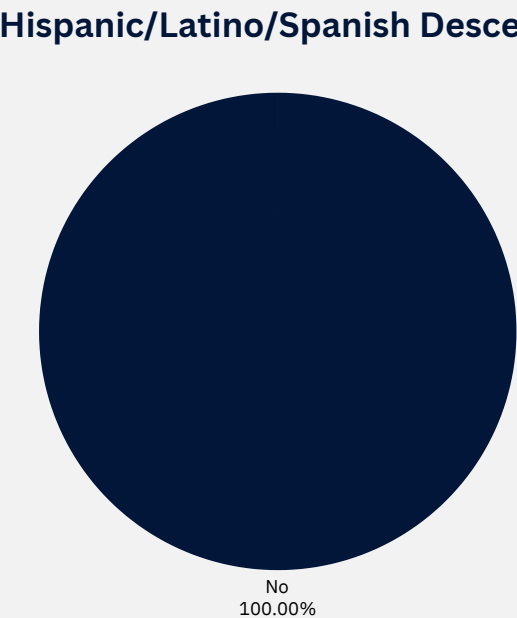
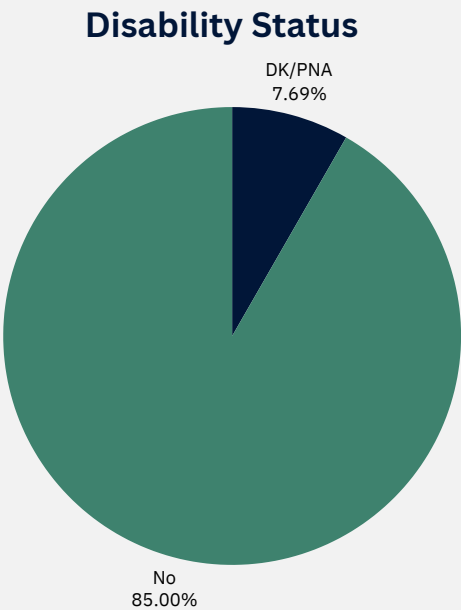
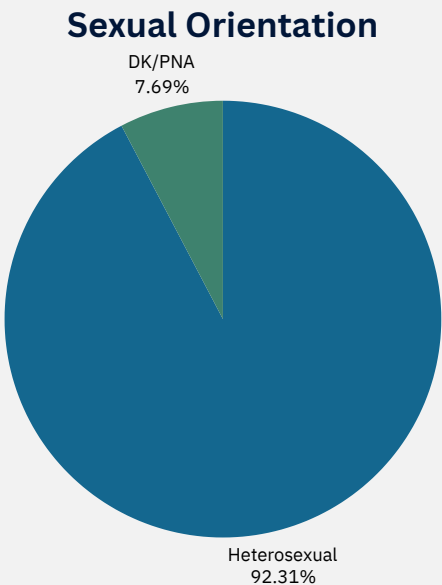


### MRM POSITIONS OFFERED/FILLED BY SPECIALTY



# Matched Applicant Characteristics

The below data is self-reported. Please note, not all applicants chose to respond and the NRMP has suppressed fields that did not meet minimum thresholds to protect confidentiality.



## Specialties Matching Service® (SMS®)

The NRMP Specialties Matching Service® (SMS®) conducts matches for subspecialty fellowship positions. The first Fellowship Match was conducted in 1984. For the 2024 appointment year, the SMS provided services for 77 subspecialties in 22 separate matches.



**SMS Fellowship Matches**  
2024 Appointment Year is Largest in History

**14,034 Applicants**

AN INCREASE OF 115 OVER 2023

**14,169 Total Positions**

AN INCREASE OF 804 OVER 2023



% Applicants Matched



% Positions Filled



Total Specialties



Specialties filling at  
least 90% of positions

### 5-Year Trends (2020–2024)

#### APPLICANTS

▲ **835**

US MD Grads

▲ **602**

US DO Grads

▲ **211**

US Citizen IMGs

▲ **342**

Non-US Citizen IMGs

IMGs=International Medical Graduates

## FELLOWS

After medical school, physician learners, or residents, complete a residency in a core specialty. Some residents may then seek additional training in a subspecialty or fellowship program. Interested eligible individuals can then apply to subspecialties or fellowships and register for the appropriate match.

To participate in a Specialties Matching Service® Fellowship Match, prior to the start of training, an applicant must have completed all training required for the position, must meet all requirements for entry into graduate medical education (GME) as prescribed by the appropriate organization, and any additional eligibility requirements provided by the sponsoring institution (e.g., a teaching hospital).

## FELLOWSHIP MATCHES

Colon and Rectal Surgery  
Emergency Medicine  
Epilepsy and Clinical Neurophysiology  
Female Pelvic Med & Reconstructive Surgery  
Hand Surgery  
Headache Medicine  
Laryngology  
Medical Genetics  
Medicine and Pediatrics Specialties  
Pain Medicine  
Pathology  
Pediatric Surgery  
Psychiatry  
Radiology  
Rehabilitation Medicine  
Spinal Cord Injury Medicine  
Sports Medicine  
Surgical Critical Care  
Surgical Oncology  
Thoracic Surgery  
Vascular Neurology  
Vascular Surgery

# 2024 Specialties Matching Service Snapshot

## WYOMING

The data for the 2024 NRMP Specialties Matching Service® (SMS®) was conducted in 2023 and early 2024. New residents generally begin their fellowship training in their matched hospital by July 1.

0  
Applicants Placed In Fellowship Training Programs in Wyoming

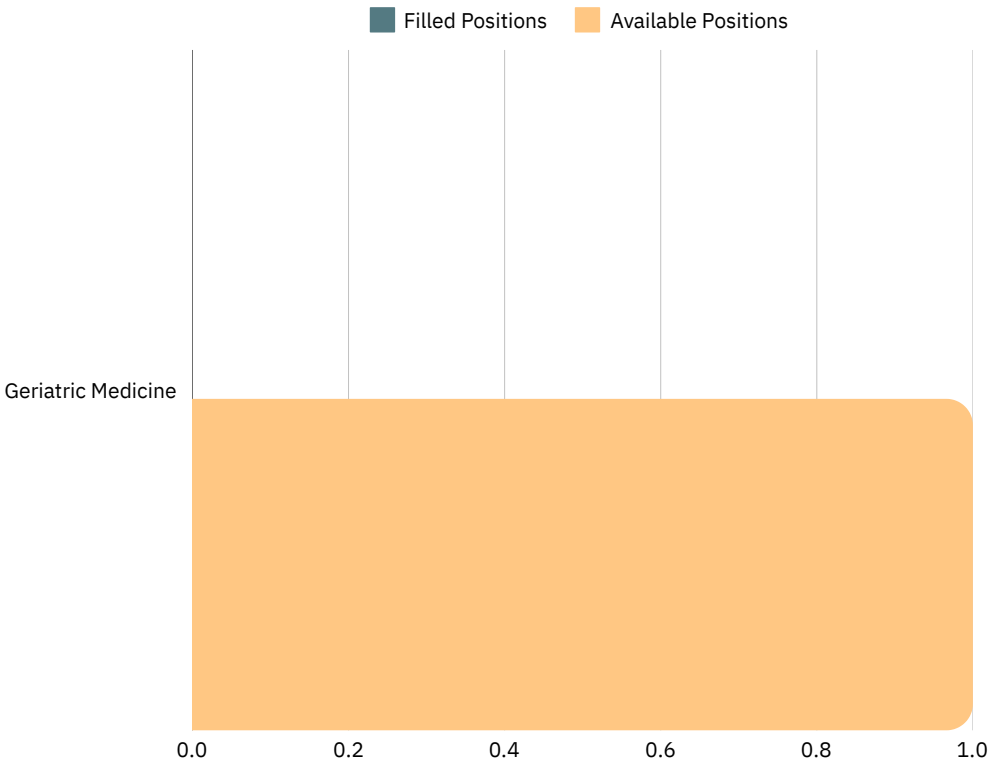


Overall Position

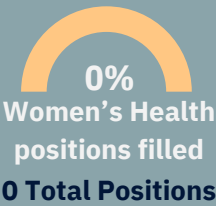
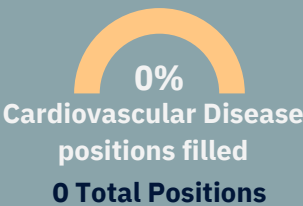


Overall Positions Filled

### SMS POSITIONS OFFERED/FILLED BY SPECIALTY



### SPECIALTIES OF INTEREST



### APPLICANT TYPES IN WYOMING PROGRAMS IN 2024

0% US MD Grads

0% US DO Grads

0% US IMGs

0% Non-US IMGs

#### APPLICANT TYPE ABBREVIATIONS:

**US MD Seniors:** A 4th-year medical student in a U.S. allopathic medical school accredited by the Liaison Committee on Medical Education (LCME) with a graduation date after July 1 in the year before the Match

**US DO Seniors:** A 4th-year medical student in a U.S. osteopathic medical school accredited by the Commission on Osteopathic College Accreditation (COCA) with a graduation date after July 1 in the year before the Match

**US MD Grads:** Graduates of U.S. medical schools accredited by the LCME

**US DO Grads:** Graduates of U.S. medical schools accredited by the COCA

**US IMGs:** A U.S. citizen who attended an international medical school

**Non-US IMGs:** A non-U.S. citizen who attended an international medical school