



National Resident Matching Program® (NRMP®)

The NRMP, also known as The Match®, is a non-profit organization that for more than 70 years has placed medical students and young physicians into the nation's clinical training programs. The Match ensures that a steady pipeline of highly qualified professionals is building the necessary skills to care for patients across the country through a process that is fair, equitable, efficient, transparent, and reliable.



2025 Main Residency Match

47,208

Certified Applicants

5.3% increase
since 2024

43,237

Total Positions

4.2% increase
since 2024



**Active Applicants
Placed**



**Overall Positions
Filled**

Overall Placement Rates

PERCENT CHANGE IN MATCHED APPLICANTS SINCE 2024

97.8%

**Active Applicant
Placement Rate**

↓0.1% US MD Seniors

98.4%

**Active Applicant
Placement Rate**

↓0.1% US DO Seniors

73.5%

**Active Applicant
Placement Rate**

↑0.1% US Citizen IMGs

60.3%

**Active Applicant
Placement Rate**

↓1.2% Non-US Citizen IMGs

Program and Position Highlights

INCREASE IN NUMBER FROM 2024

- 1,734 more certified positions
- 231 more certified programs
- 877 more positions in Primary Care



How We Make A Difference

- NRMP data informs national trends in specialty preferences and reflects physician distribution across the U.S.
- NRMP research drives national conversations about bias in medical education and equity in population health.
- NRMP Matches have served more than 1.4 million applicants for both residency and fellowship training since 1992.



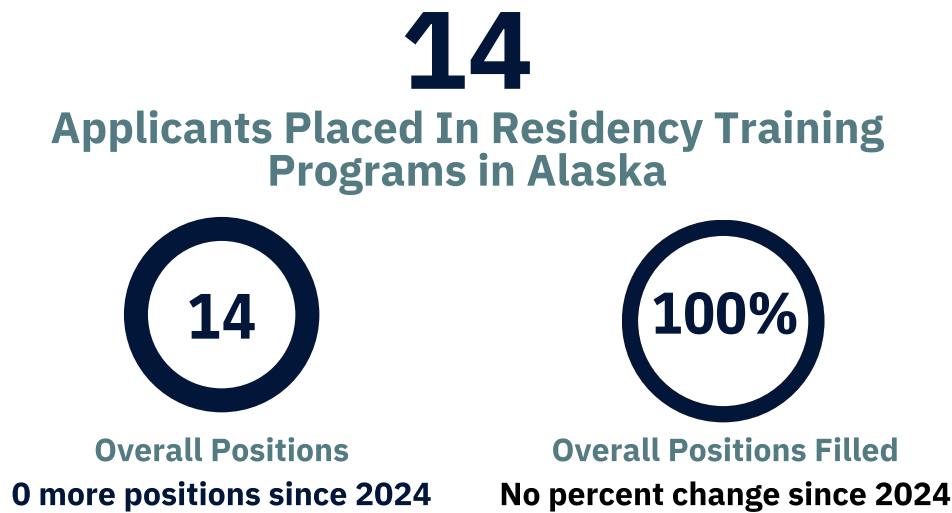
How We Do It

- Applicants submit to the NRMP lists of programs ranked from most to least preferred of where they would like to train. At the same time, training programs submit lists of applicants who they would most like to train.
- Using a proprietary algorithm, the NRMP places applicants with their most preferred programs that also prefer them.
- Once matched, applicants and programs enter into a binding commitment for training. The binding commitment ensures the continuity and distribution of physicians into community-based and academic centers across the U.S.
- With a Match, applicants and programs are treated equally, and their preferences drive outcomes, thereby reducing bias and inequities in training selection.

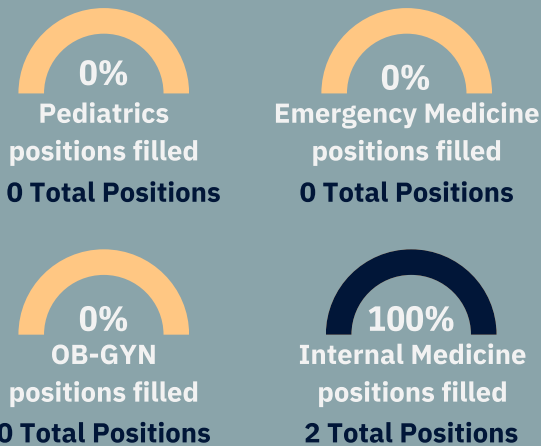
2025 Main Residency Match Snapshot

ALASKA

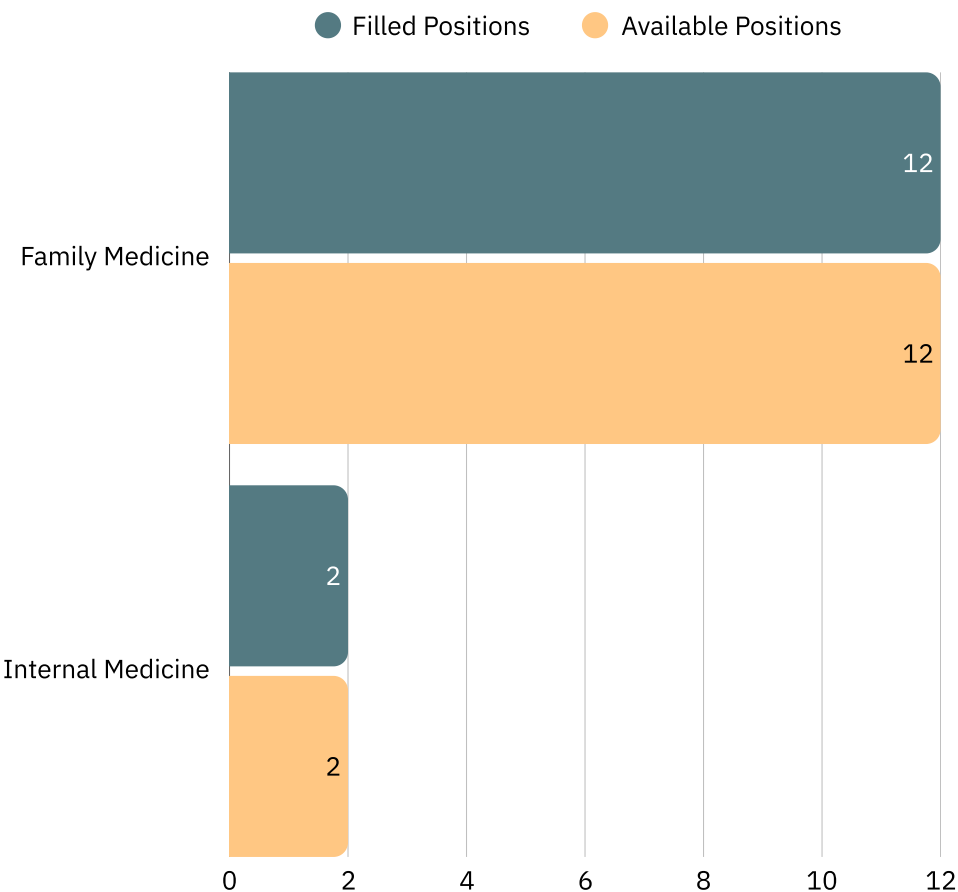
The 2025 Main Residency Match (MRM) was completed on March 21. New residents begin their core training in their matched hospital by July 1 and remain there, depending on their specialty, for 3 to 7 years.



SPECIALTIES OF INTEREST



TOP MRM POSITIONS OFFERED/FILLED BY SPECIALTY



APPLICANT TYPES IN ALASKA PROGRAMS IN 2025

- 7.1% US MD Seniors
- 28.6% US DO Seniors
- 14.3% US MD Grads
- 7.1% US DO Grads
- 14.3% US IMGs
- 28.6% Non-US IMGs

APPLICANT TYPE ABBREVIATIONS:

US MD Seniors: A 4th-year medical student in a U.S. allopathic medical school accredited by the Liaison Committee on Medical Education (LCME) with a graduation date after July 1 in the year before the Match

US DO Seniors: A 4th-year medical student in a U.S. osteopathic medical school accredited by the Commission on Osteopathic College Accreditation (COCA) with a graduation date after July 1 in the year before the Match

US MD Grads: Graduates of U.S. medical schools accredited by the LCME

US DO Grads: Graduates of U.S. medical schools accredited by the COCA

US IMGs: A U.S. citizen who attended an international medical school

Non-US IMGs: A non-U.S. citizen who attended an international medical school

Specialties Matching Service® (SMS®)

The NRMP Specialties Matching Service® (SMS®) conducts matches for subspecialty fellowship positions. The first Fellowship Match was conducted in 1984. For the 2025 appointment year, the SMS provided services for 77 subspecialties in 22 separate matches.



SMS Fellowship Matches 2025 Appointment Year

14,833 Active Applicants

AN INCREASE OF 799 FROM 2024

14,620 Positions

AN INCREASE OF 451 FROM 2024



% Applicants Matched



% Positions Filled



Total Specialties



Specialties filling at
least 90% of positions

5-Year Trend (2021–2025)

ACTIVE APPLICANTS

AN INCREASE OF 1,908 FROM 2021

▲ **685**

US MD Grads

▲ **280**

US Citizen IMGs

▲ **619**

US DO Grads

▲ **332**

Non-US Citizen IMGs

IMGs=International Medical Graduates

FELLOWS

After medical school, physician learners, or residents, complete a residency in a core specialty. Some residents may then seek additional training in a subspecialty or fellowship program. Interested eligible individuals can then apply to subspecialties or fellowships and register for the appropriate match.

To participate in a Specialties Matching Service® Fellowship Match, prior to the start of training, an applicant must have completed all training required for the position, must meet all requirements for entry into graduate medical education (GME) as prescribed by the appropriate organization, and any additional eligibility requirements provided by the sponsoring institution (e.g., a teaching hospital).

FELLOWSHIP MATCHES

Colon and Rectal Surgery
Emergency Medicine
Epilepsy and Clinical Neurophysiology
Female Pelvic Med & Reconstructive Surgery
Hand Surgery
Headache Medicine
Laryngology
Medical Genetics
Medicine and Pediatrics Specialties
Pain Medicine
Pathology
Pediatric Surgery
Psychiatry
Radiology
Rehabilitation Medicine
Spinal Cord Injury Medicine
Sports Medicine
Surgical Critical Care
Surgical Oncology
Thoracic Surgery
Vascular Neurology
Vascular Surgery

2025 Specialties Matching Service Snapshot

ALASKA

The data for the 2025 NRMP Specialties Matching Service® (SMS®) was conducted in 2024 and early 2025. New residents generally begin their fellowship training in their matched hospital by July 1.

1
Applicants Placed In Fellowship Training Programs in Alaska



Overall Position



Overall Positions Filled

SPECIALTIES OF INTEREST



Addition

positions filled

1 Total Position



Cardiovascular Disease

positions filled

0 Total Positions



Infectious Disease

positions filled

0 Total Positions



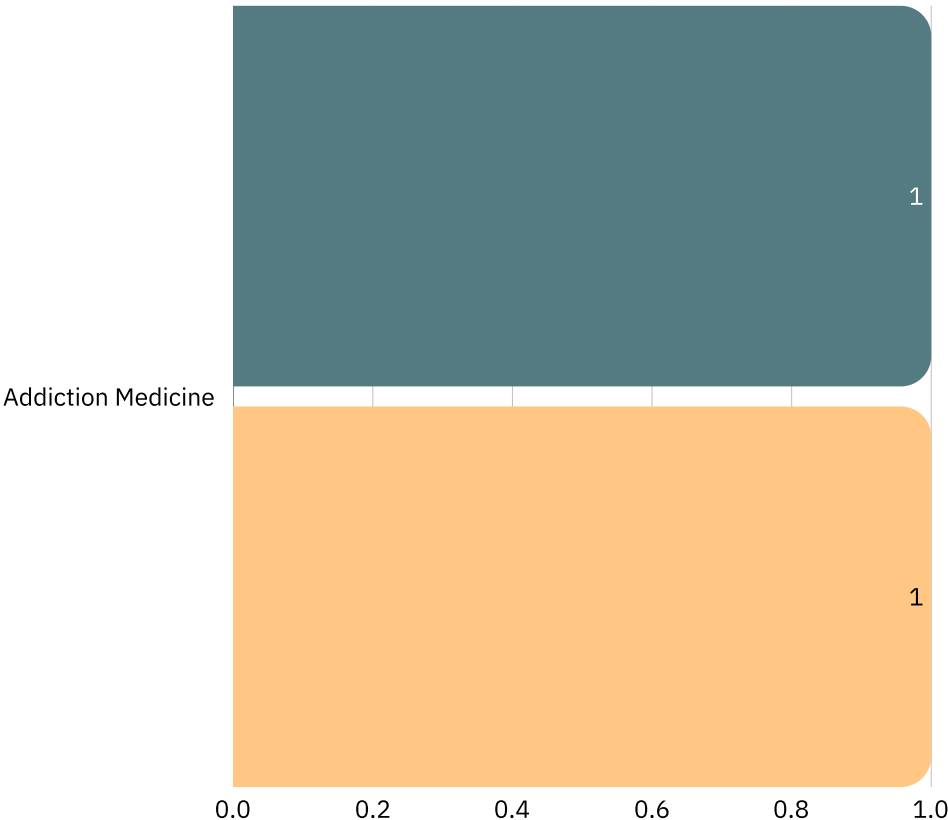
Women's Health

positions filled

0 Total Positions

TOP SMS POSITIONS OFFERED/FILLED BY SPECIALTY

● Filled Positions ● Available Positions



APPLICANT TYPES IN ALASKA PROGRAMS IN 2025

100% US MD Grads

0% US DO Grads

0% US IMGs

0% Non-US IMGs

APPLICANT TYPE ABBREVIATIONS:

US MD Seniors: A 4th-year medical student in a U.S. allopathic medical school accredited by the Liaison Committee on Medical Education (LCME) with a graduation date after July 1 in the year before the Match
US DO Seniors: A 4th-year medical student in a U.S. osteopathic medical school accredited by the Commission on Osteopathic College Accreditation (COCA) with a graduation date after July 1 in the year before the Match

US MD Grads: Graduates of U.S. medical schools accredited by the LCME

US DO Grads: Graduates of U.S. medical schools accredited by the COCA

US IMGs: A U.S. citizen who attended an international medical school

Non-US IMGs: A non-U.S. citizen who attended an international medical school