



National Resident Matching Program® (NRMP®)

The NRMP, also known as The Match®, is a non-profit organization that for more than 70 years has placed medical students and young physicians into the nation's clinical training programs. The Match ensures that a steady pipeline of highly qualified professionals is building the necessary skills to care for patients across the country through a process that is fair, equitable, efficient, transparent, and reliable.



2025 Main Residency Match

47,208

Certified Applicants
5.3% increase
since 2024

43,237

Total Positions
4.2% increase
since 2024



**Active Applicants
Placed**



**Overall Positions
Filled**

Overall Placement Rates

PERCENT CHANGE IN MATCHED APPLICANTS SINCE 2024

97.8%

**Active Applicant
Placement Rate**
↓0.1% US MD Seniors

98.4%

**Active Applicant
Placement Rate**
↓0.1% US DO Seniors

73.5%

**Active Applicant
Placement Rate**
↑0.1% US Citizen IMGs

60.3%

**Active Applicant
Placement Rate**
↓1.2% Non-US Citizen IMGs

Program and Position Highlights

INCREASE IN NUMBER FROM 2024

- 1,734 more certified positions
- 231 more certified programs
- 877 more positions in Primary Care



How We Make A Difference

- NRMP data informs national trends in specialty preferences and reflects physician distribution across the U.S.
- NRMP research drives national conversations about bias in medical education and equity in population health.
- NRMP Matches have served more than 1.4 million applicants for both residency and fellowship training since 1992.



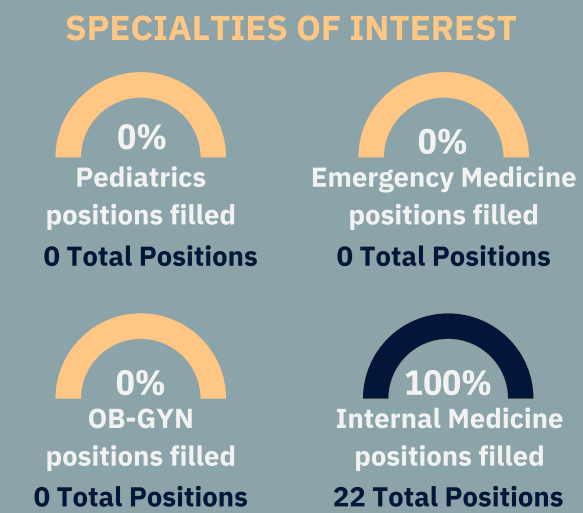
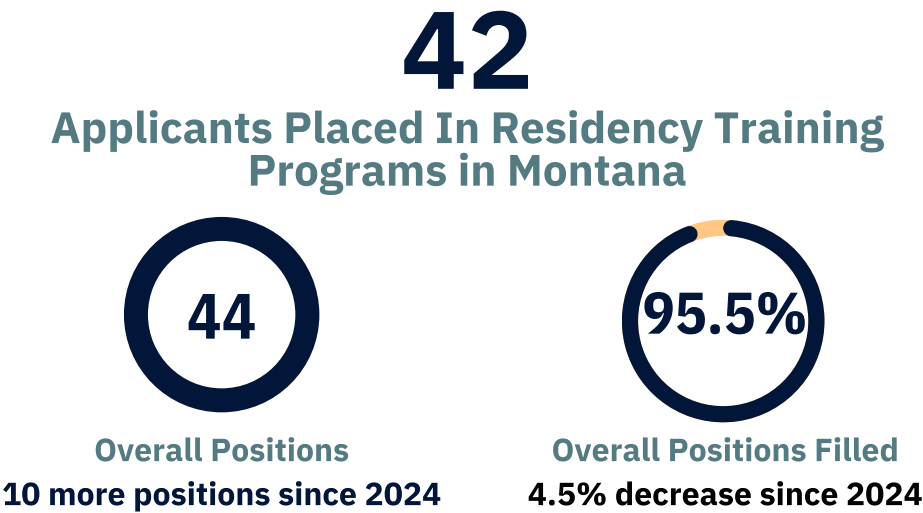
How We Do It

- Applicants submit to the NRMP lists of programs ranked from most to least preferred of where they would like to train. At the same time, training programs submit lists of applicants who they would most like to train.
- Using a proprietary algorithm, the NRMP places applicants with their most preferred programs that also prefer them.
- Once matched, applicants and programs enter into a binding commitment for training. The binding commitment ensures the continuity and distribution of physicians into community-based and academic centers across the U.S.
- With a Match, applicants and programs are treated equally, and their preferences drive outcomes, thereby reducing bias and inequities in training selection.

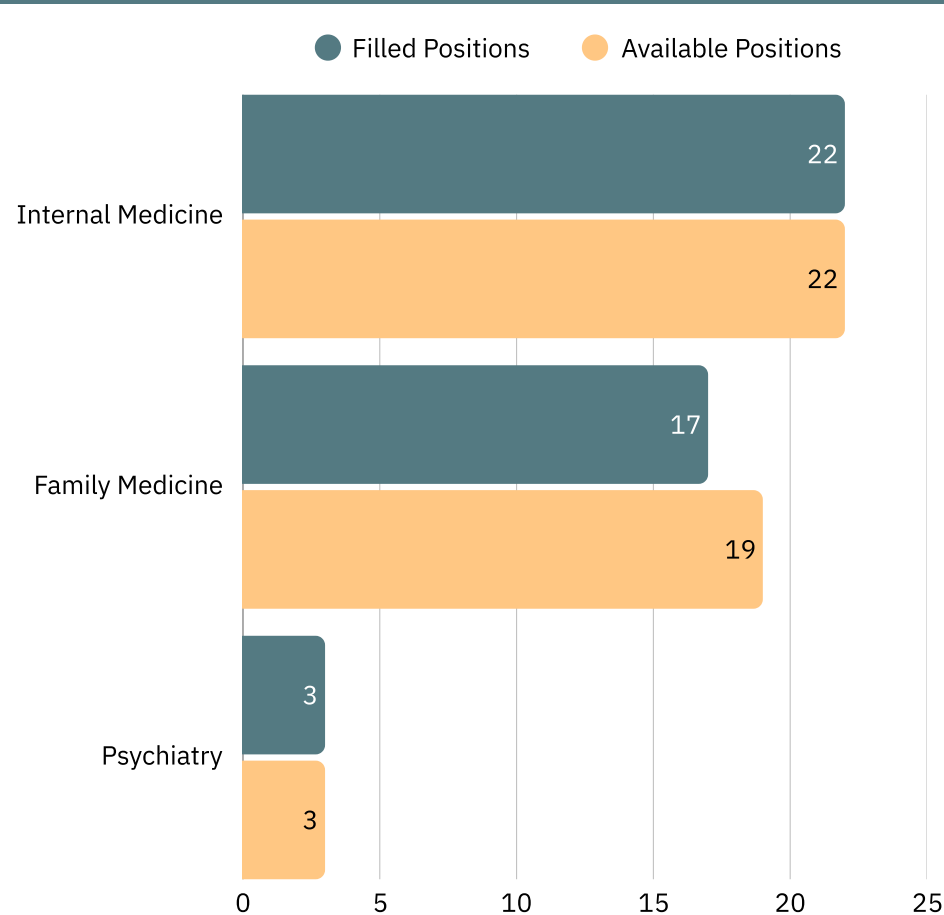
2025 Main Residency Match Snapshot

MONTANA

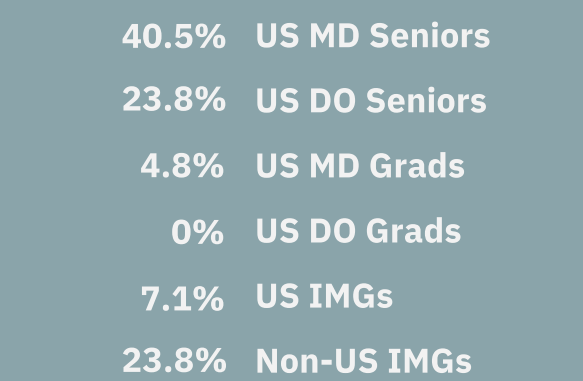
The 2025 Main Residency Match (MRM) was completed on March 21. New residents begin their core training in their matched hospital by July 1 and remain there, depending on their specialty, for 3 to 7 years.



TOP MRM POSITIONS OFFERED/FILLED BY SPECIALTY



APPLICANT TYPES IN MONTANA PROGRAMS IN 2025



APPLICANT TYPE ABBREVIATIONS:
US MD Seniors: A 4th-year medical student in a U.S. allopathic medical school accredited by the Liaison Committee on Medical Education (LCME) with a graduation date after July 1 in the year before the Match
US DO Seniors: A 4th-year medical student in a U.S. osteopathic medical school accredited by the Commission on Osteopathic College Accreditation (COCA) with a graduation date after July 1 in the year before the Match
US MD Grads: Graduates of U.S. medical schools accredited by the LCME
US DO Grads: Graduates of U.S. medical schools accredited by the COCA
US IMGs: A U.S. citizen who attended an international medical school
Non-US IMGs: A non-U.S. citizen who attended an international medical school